

Programming Instructions

for YewdaleDefiant[®] motors
(980003)

Programming Instructions

for YewdaleDefiant[®] motor
(980003)

Programming Instructions

YewdaleDefiant® 7.4v DC Solar Powered Tubular Motor (980003)

with inbuilt radio receiver, transformer and electronic limit stop

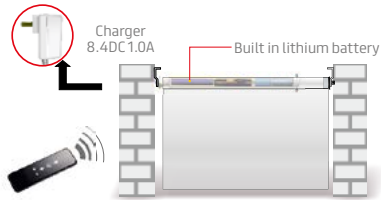
Programme Button:

PROG Buttons are under the cover on wall switches. For single channel wall switches use the PROG button on the left.



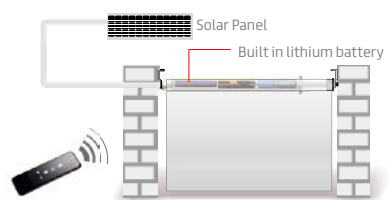
Applications:

Application 1: Lithium Battery Power



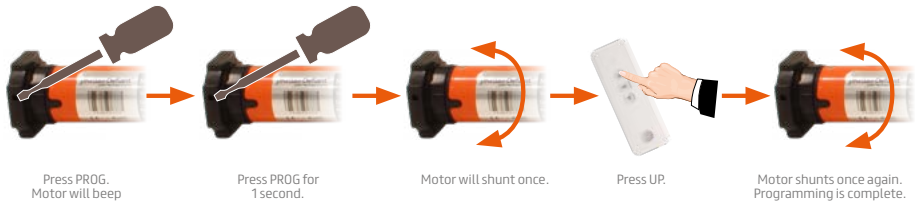
Fully charged within 4 hours. Please remove battery charger after full charge.

Application 2: Lithium Battery Power

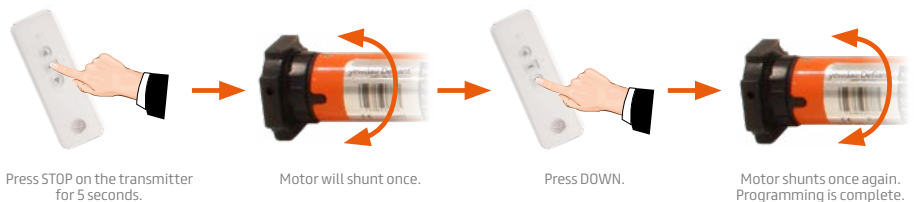


In direct sunlight battery is fully charged within 2 days.

Programming:



Change direction: (of travel if required)

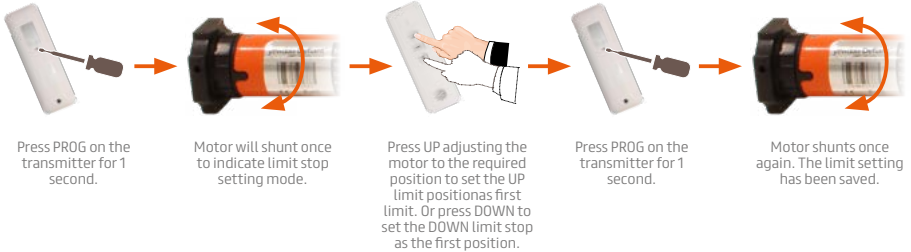


First limit position setting:



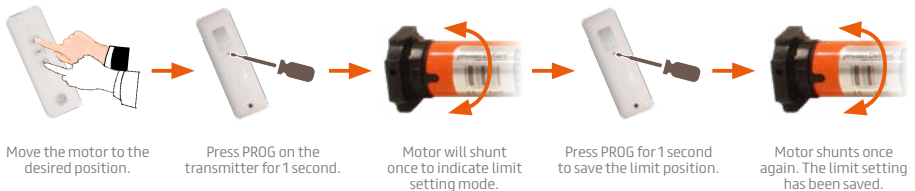
Press the programme button before reaching the first limit position. For best results, this should be carried out when the blind is approximately halfway down.

(If there's no other action within 30 seconds, the motor will exit from the limit position preparation automatically)



Other limit position settings:

(If there's no other action within 30 seconds, the motor will exit from the limit position preparation automatically)



Programming Instructions

YewdaleDefiant® 7.4v DC Solar Powered Tubular Motor (980003)

with inbuilt radio receiver, transformer and electronic limit stop

Limit position fine tuning:

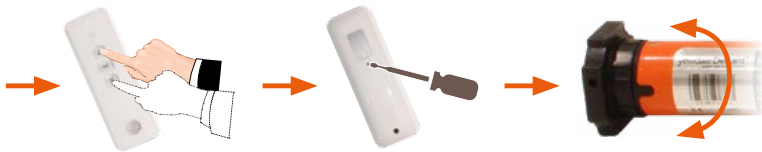
(If there's no other action within 30 seconds, the motor will exit from the limit position preparation automatically)



Let the motor run into the limit stop position that needs fine tuning.

Press PROG for 1 second.

Motor will shunt once to indicate limit setting mode.



Adjust to the required position.

Press PROG for 1 second to save the limit position.

Motor shunts once again. The fine tune setting has been saved.

Delete the limit stop position (please note: the first limit position can't be deleted)



Let the motor run to the limit stop position that is to be deleted.

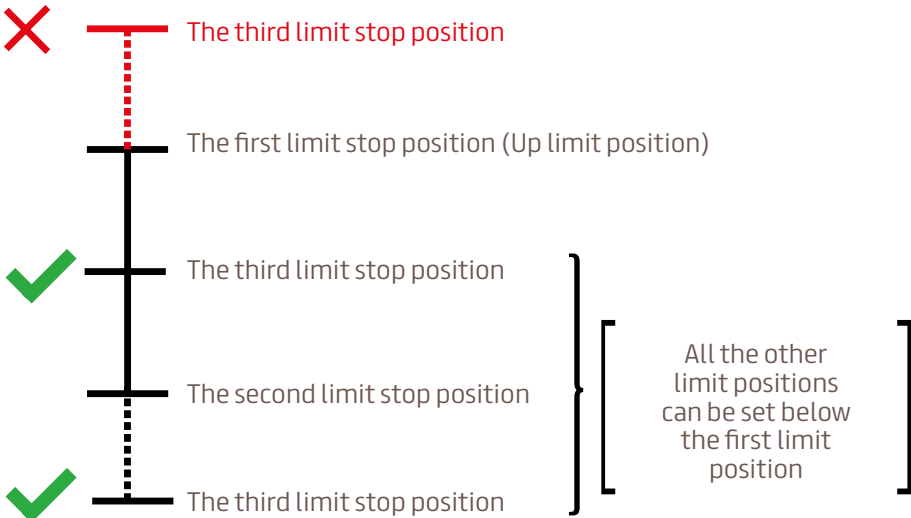
Press PROG for 7 seconds.

Motor will shunt once to indicate limit setting mode.

Within 7 seconds the motor will shunt once again. The preset limit position is now cleared.

Limit position setting:

1. A maximum of six different limit stop positions can be set. The furthest two positions are called the UP and DOWN limit stop positions. The others are called the middle limit stop positions;
2. When the first limit position is in the UP limit stop position (as below illustration), all other limit positions can only be set below this position; the same applies when setting the first DOWN limit stop position, all other limit stop positions can only be set above this position;
3. Every limit stop position can be fine-tuned or deleted separately (The first limit stop position can only be fine-tuned but can't be deleted separately. It can only be deleted by resetting the memory);
4. The motor will stop at the next limit stop position after accepting an UP/ DOWN instruction. When it reaches the UP limit stop position, any additional UP instruction is cancelled out; when it reaches the DOWN limit stop position, the DOWN instruction is also cancelled;
5. Pressing either the UP/DOWN button twice on the transmitter within 1 second will instruct the motor to go directly to the UP/DOWN limit stop position without stopping at any middle limit stop.



Programming Instructions

YewdaleDefiant® 7.4v DC Solar Powered Tubular Motor (980003)

with inbuilt radio receiver, transformer and electronic limit stop

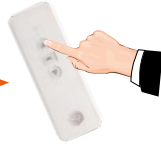
Add the new transmitter:



Press STOP on the transmitter for 5 seconds.



Motor will shunt once.



Press UP on the new transmitter.



Motor shunts once again. The transmitter is stored.

Delete single channel memory:



Press STOP on the transmitter for 5 seconds.



Motor will shunt once.



Press PROG for 1 second.



Motor shunts once again. Single channel has been deleted.

Delete all the memories:

(After deleting all codes, the motor will be restored to factory setting)



Press STOP for 5 seconds.



Motor will shunt once.



Press PROG for 7 seconds within 10 seconds of pressing STOP.



Motor will shunt once.



Motor will shunt twice within 7 seconds. The memory has been deleted.

Turn the motor off:



Press PROG on the motor for 7 seconds.



Motor will beep and shunt once.



Motor will beep again after 7 seconds. The motor has been turned off.



Trouble Shooting:

Items	Problems	Cause	Solution
1	The motor stops suddenly whilst running	<ol style="list-style-type: none">1. Motor has exceeded overheating protection +130°C2. Motor needs recharging	<ol style="list-style-type: none">1. After the motor has cooled sufficiently, motor will perform as required2. The motor will resume once power is back on
2	what happens if the motor makes a beeping noise in use	<ol style="list-style-type: none">1. Low battery power.	<ol style="list-style-type: none">1. plug the motor into the charger as soon as possible



Head Office:

Enterprise Way,
Wickford, Essex, SS11 8DH
Call: +44 (0)1268 570900
Email: sales@yewdale.co.uk

London Office & Showroom:

4 Sutton Lane,
London, EC1M 5PU
Call: +44 (0)203 818 5905

For more information on all
Yewdale products, please call
the sales department.



yewdale **Defiant**[®]
FABRIC AND BLIND SYSTEMS



yewdale **Kestrel**[®]
MAGNETIC ANTI-CLIMATE SYSTEM



yewdale **Movatrack**[®]
CUBICLE AND TRACK SYSTEMS



yewdale **Harrier**[®]
CUBICLE AND SHOWER CURTAINS



yewdale **Vitesse**[®]
CURTAIN TRACK SYSTEMS