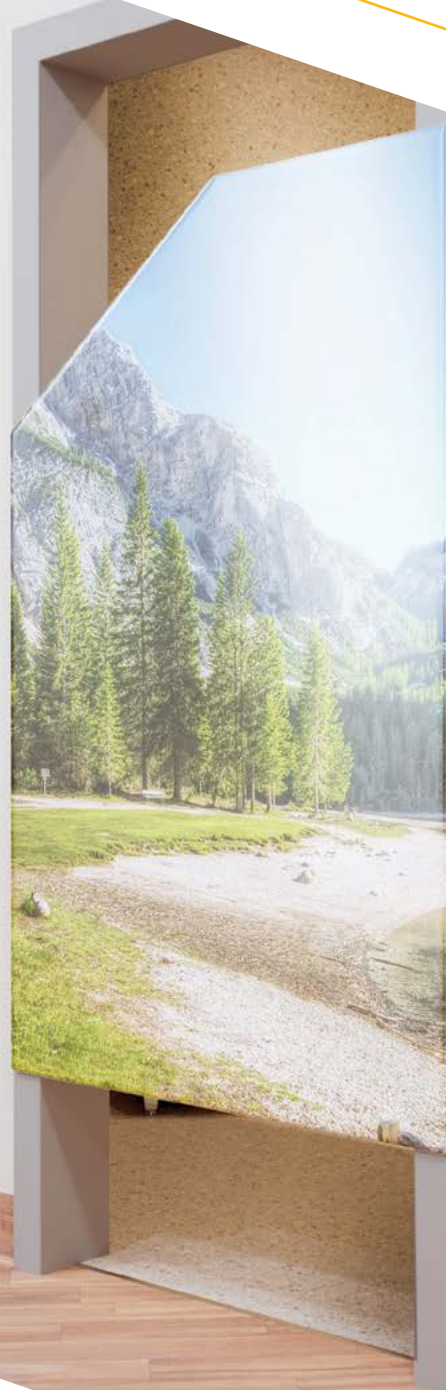


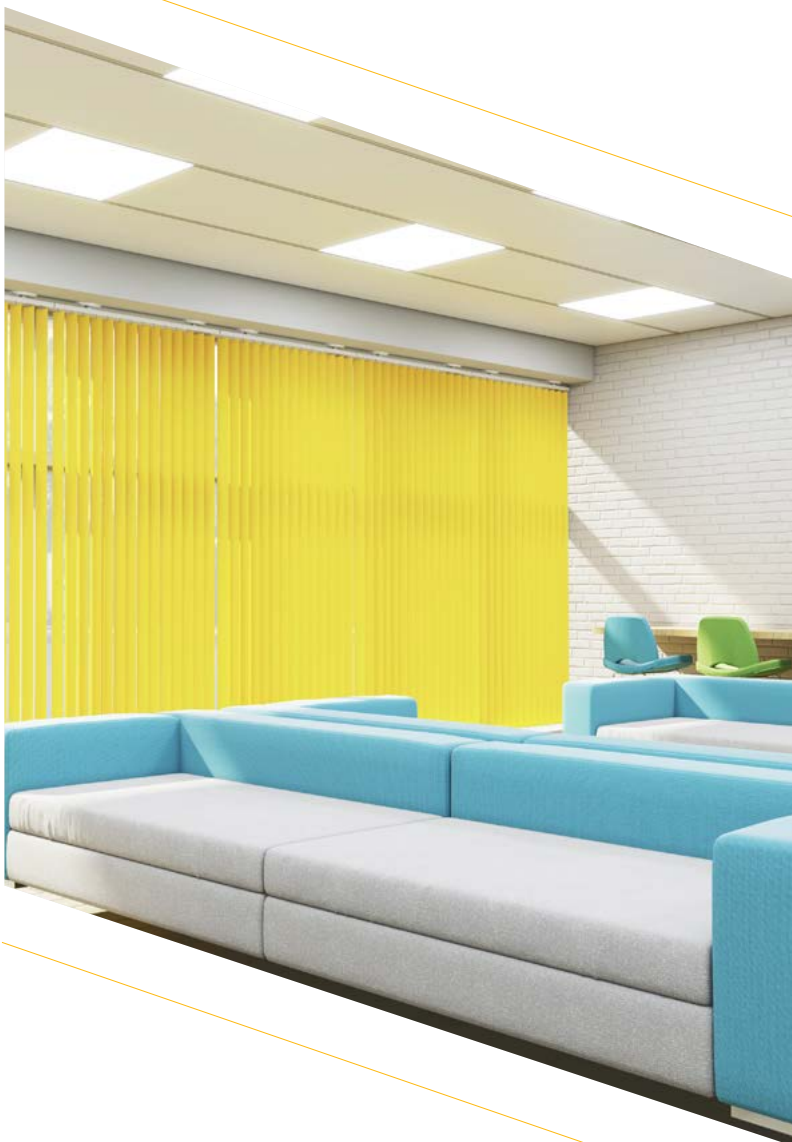
The only fail-safe\*  
range of exclusive  
anti-ligature products  
designed to maximise  
the safety of people by  
removing the potential  
of harm where secure  
care is required.



# YewdaleKestrel® the magnetic anti-ligature system range

The only fail-safe\* range of exclusive anti-ligature products designed to maximise the safety of people by removing the potential of harm where secure care is required.

The YewdaleKestrel® magnetic anti-ligature system provides a highly effective method of saving the lives of service users. It also gives peace of mind to their carers by ruling out the chance of self-harm.



## The full range YewdaleKestrel®

### FAQs

What makes this magnetic system the only 100% fail-safe\* anti-ligature system on the market?

### Technical & Safety Information

Key information covering the technical details, fixings, loading figures and a definition of the term fail-safe.

### YewdaleKestrel® Policy

#### Lighter Load Options

We provide a solution for instances where a standard magnet may not have a breakaway point low enough.

#### Compatability Table

For further details of which of our systems can accommodate the standard, medium and low load magnet options.

### YewdaleKestrel® SafeDoor 2

Yewdale's flagship anti-ligature en-suite privacy solution. This lightweight door is made of soft foam with a robust faux leather cover.

### YewdaleKestrel® SafeDoor Plus Connect

SafeDoor Plus Connect is an anti-ligature ensuite door with magnets permanently fixed to prevent them from being misused

### YewdaleKestrel® SafeDoor Plus

The newest version of our UK-made Crib 7 load-release door. Meets the demands of Infection Prevention and Control (IPC).

### 4 YewdaleKestrel® SafeArt 16

Designed to enhance wellbeing, our anti-ligature artwork allows vibrant imagery to be displayed in high-risk settings.

### 5 Accessories 17-21

Some items in the washroom get overlooked. That's why the YewdaleKestrel® range of accessories were designed. They support your welfare items 24 hours a day, time after time.

### 6-7 Cubicle Curtain Tracks 22

The YewdaleKestrel® cubicle curtain track system has been tailored to suit bespoke internal privacy requirements. From a single bay replacement through to a multi-room complex, the flexibility of configuration offers you more than a solution.

### 9 Shower Tracks 23

The YewdaleKestrel® track system doubles as the perfect answer for all shower cubicle requirements.

### Window Curtain Tracks 24-26

Featuring only high performance hand drawn tracks, you can rest assured that the window curtain tracks offered by YewdaleKestrel® will operate with high levels of efficiency regardless of the amount of times the tracks are used as a point of ligature.

### 14 Roller Blinds 28-30

The specially adapted range of roller blinds that make up the YewdaleKestrel® roller blind package help to elevate any roomset environment, laying out the perfect setting for well-being.

### Vertical Blinds 31

The YewdaleKestrel® vertical blind with wand control provides a safe solution for all your shading requirements.

## The YewdaleKestrel® Anti-Ligature System FAQs

Providing an environment that is conducive towards a peaceful way of life and an area of calm ensures resident users are calmer, happier and easier to manage and care for. Pair this with the peace of mind for the carer community, knowing that all avenues to prevent ligature risks have been researched and the appropriate measures installed. With an ever-increasing host of options available to the health care sector, why should there still be cause for alarm?

Many systems on the market cover their product offering with a small-print reference to the limitation of a safety product as opposed to a fully anti-ligature solution. For help when making your next decision, or to check how your current system fares with regards to a fail-safe\* industry standard have a quick read through the 5 points listed below. If you would like a non-obligatory, unbiased view of your system from an anti-ligature specialist, please call the anti-ligature support team on +44(0)1268 570900.

### Can it be jammed?

Any product that involves a male coupling inserting into a female coupling has the potential to jam. Service users have been known to wrap a small amount of toilet paper tissue around a male coupling prior to inserting it carefully back into its female socket. The subsequent action supported enough weight to increase the safe breakaway amount and a ligature opportunity arose.

With the YewdaleKestrel® magnetic anti-ligature system there are no male and female sockets. Two surfaces instead make up the fail-safe\* element of the scheme and cannot be jammed by additional products. The edge of the disk that joins the magnet is chamfered as standard and is difficult to be jammed laterally.

### Does the product fail if pulled sideways?

Some systems available in the global market offer similar friction based devices however these are designed to activate a release function when a direct downward motion is created. If the direct motion works in a direction other than straight down, the shape of the male item has been proved to cause the release coupling to jam up rather than release. If your option has the potential to work in this way, you need to be aware that a ligature point can be arrived at by moving the downward force to an angle of less than 90°, commonly known as a sideways jam.

The YewdaleKestrel® magnetic anti-ligature system works by short-range magnetic attraction. As with all short-range magnets the slightest movement of the magnetic surface away from the magnet will cancel out the force of the magnetic field and guarantees a release action. This action works with any downward motion regardless of which direction the pressure is applied from.

### Do you have to replace parts after it prevents a ligature?

The construction of certain safety systems relies on the shearing of smaller plastic components to ensure the product becomes detached in the event of an increase in the supported weight capacity. The use of couplings that shear means that they have to be replaced before the product can be again used in its previous location. This adds unnecessary inconvenience to the staff in any organisation whilst the product is unavailable to be used, and requires replacement.

The YewdaleKestrel® magnetic anti-ligature system works solely on the principle of magnetic attraction and uses no breakable parts for this. In the event of an incident occurring, resulting in it becoming detached from its mounting, all that is required is for the item to be held immediately below the magnetic bracket where the magnetic force will raise the item back into position with no wasted downtime suffered.

### Will it bring a whole system down?

The strength of any system is often gained by coupling multiple items together to make one complete package. This does not work in your favour however when one part of the system releases due to an increased load being applied. Whilst this will still ensure that the system operates in its ligature-prevention purposes, additional damage and injury can occur due to the 'domino' effect of increased pressure being applied to the rest of the system as a result.

The YewdaleKestrel® magnetic anti-ligature divider curtain track system has been carefully designed to operate as individual tracks in the event of an incident whilst still being able to work together along with other individual YewdaleKestrel® tracks when built into a larger package. For more details, call the anti-ligature support team on +44(0)1268 570900.

### Will constant use make it more vulnerable to failure?

The effect of usage of almost any product/system makes it subject to gradual physical deterioration regardless of age, use, and/or weathering. In similar effect the use of friction-based facilities can be subject to 'wear and tear' resulting in increased tolerances over time. Although this will not necessarily unduly affect the anti-ligature properties of the application it can result in the system releasing prematurely and causing more problems.

In a direct contrast, the philosophy of the YewdaleKestrel® magnetic anti-ligature system is based entirely around the principle of the forces of magnetism. Permanent magnets will retain their magnetic properties indefinitely and are not subject to decline, nor the forces of 'wear and tear'.

	YewdaleKestrel®	Socket / Friction
Impossible to jam	✓	✗
Sideways pull test pass	✓	✗
Anti-domino effect	✓	✗
Total collapse system	✓	✗
Toothpaste test	✓	✗
Easy to put back in place	✓	✗
Polycarbonate plastic	✓	✗
100% consistent	✓	✗
Fail-safe*	✓	✗
Full package	✓	✗
Is it a safety product	✓	✓

# The YewdaleKestrel® Anti-Ligature Technical & Safety Information

## Technical & Safety

Research has identified that people are at the greatest risk of death by ligature in areas of mental health hospital environments, and in prison and detention centres. Service users in these areas have a tendency to be overly irrational in their behaviour and hence need an especially high level of care. Ligature points can be formed from a variety of innocuous items commonly found in a room, and so great care needs to be taken when a room is being designed and the anti-ligature items are being specified.

YewdaleKestrel® anti-ligature systems are designed to separate from their magnetic brackets when excessive weight is applied. They are easily reattached to keep the system functioning fully.

In use as a permanent feature for well over 10 years in many UK psychiatric institutions and prisons, and globally in mental health facilities, the YewdaleKestrel® magnetic anti-ligature system lends itself to bespoke requirements of varied environments.

As a result, YewdaleKestrel® products are designed as standalone products only. Care should be taken when assessing or arranging a room to ensure that YewdaleKestrel® products cannot be misused in conjunction with any other item, furniture or fixings in the room.

It is the responsibility of the end user or client to ensure the product is suitable for the environment it is being installed in. YewdaleKestrel® products must be fitted by a qualified professional following the manufacturer's instructions. Failure to do so could jeopardise the product's effectiveness as an anti-ligature system.

## Wall fix bracket

Wall-fix bracket in unbreakable polycarbonate, with smoothly contoured and angled top surface for safety.

Dimensions: L48mm W37mm H60mm



## Top fix bracket

The top-fix bracket in unbreakable polycarbonate. Slim profile, with all fixings concealed - an essential safety feature.

Dimensions: L82mm W57mm H12mm

## What the term fail-safe means in our literature\*

The 'fail-safe' guarantee is only applicable in an anti-ligature environment where the system cannot be used in conjunction with anything else to create a ligature point. YewdaleKestrel® systems are guaranteed to safely separate every time excessive weight is applied to the device, but it is the responsibility of the installer and end user to ensure that the YewdaleKestrel® anti ligature system cannot be used unsafely afterwards.

Yewdale cannot be held responsible for any actions of the user that may result in the creation of a ligature point through misuse of YewdaleKestrel® systems before or after it has separated from its magnetic brackets.

## Using the YewdaleKestrel® anti-ligature system safely

To ensure the safety of the YewdaleKestrel® anti-ligature device, you must follow the below points.

- Failure to install the system correctly jeopardises the system's effectiveness.
- YewdaleKestrel® systems should not be used in conjunction with any other brand of anti-ligature products.
- YewdaleKestrel® systems only maintain their effectiveness in an anti-ligature environment which is geared towards ensuring the safety of the service user.
- Due to the strong magnets used in YewdaleKestrel® anti-ligature systems should not be placed near sensitive electronic equipment. Keep at least 150mm clearance of the underside of the brackets.
- Any load-release device, by its nature, may cause damage when operated. Be aware that articles suspended from the YewdaleKestrel® magnetic anti-ligature system will come down when pulled.
- Always follow the instructions supplied with the system

## Loading figures for standard strength brackets

No part of a YewdaleKestrel® installation should be able to withstand a vertically downward force of more than 400 Newtons, which is equivalent to a static load of approximately 40kg. Most readings will be in the region of 15-30kg, depending on configuration and proximity to brackets (20kg per bracket).

To cater for situations where a lighter breakaway point is needed, Yewdale has an additional two lower load capacity options available. The medium load capacity breaks away at approximately 17kg per bracket. The low load capacity option breaks away at approximately 13kg per bracket and the magnets are coloured black for easy distinction.

# YewdaleKestrel® Policy

## Method Statement:

This policy aims to fulfil the expectation of clients and installers for quality fitting, commissioning, subsequent in situ service and testing of the Kestrel Anti-Ligature System ("the System").

## Principles & Values:

It is imperative to ensure that the System is only installed by competent persons in line with Yewdale's fitting instructions. Failure to follow the manufacturer's guidance could jeopardise the System's effectiveness and therefore any warranties specified in our terms and conditions.

Please note, the YewdaleKestrel® K100 Cubicle Track must only be installed by approved persons who have completed the YewdaleKestrel® training and understand the risks associated with the products and fitting the System incorrectly. It is a mandatory requirement that only those individuals with a valid numbered YewdaleKestrel® certificate are able to install this fail-safe anti-ligature cubicle track system.

YewdaleKestrel® training is available which provides instructions regarding safe installations, product properties and maintenance requirements. The training is imperative to ensure the standard of installation is in line with both the manufacturer's instruction and compliant with NHS policies such as HBN 00-10 Part E which protect both healthcare providers, patients and Yewdale. Other policies relating to this can be found below:

The **Never Event** List states

**Failure to install functional collapsible shower or curtain rails  
Involves either:**

- Failure of collapsible curtain or shower rails to collapse when an inpatient attempts or completes a suicide.
- Failure to install collapsible rails and an inpatient attempt or completes a suicide using non-collapsible rails.

**Setting:** All settings providing NHS-funded mental health inpatient care.

**The NHS Health Building Note 00-10 Part E Policy states under the heading "Fitting and Maintenance" –**

- 5.2 - All tracking should be tested annually as per manufacturer's instructions to ensure that changes made to the configuration or environmental conditions have not adversely affected performance.

- 5.5 - The manufacturer's recommendations in respect of periodic inspection and maintenance should be followed to ensure that acceptable levels of performance are maintained.
- 6.27 - Curtains should be weight tested on installation and that weight should be recorded. Each reduced ligature system is different in the means of deploying when load is added, therefore it is important that accredited training from the manufacturer is undertaken before testing takes place.

Refer to the O+M Guidance at the end of this policy for more information on fitting and maintenance.

The Estates & Facilities Alert EFA/2019/003 published 11 March 2019 by NHS Estates provides an extensive list of checks to carry out, including (but not limited to):

Carry out a collaborative multi-disciplinary risk assessment in-situ at department level to check all 'anti ligature' type curtain rails are installed and maintained in line with manufacturer's instructions and the actions below.

**The Safety Notice published 11 January 2002 SN(01)01 by NHS Estates states :**

In adult psychiatric setting, any cubicle track, curtain track, shower track and wardrobe rails with load release support systems must be maintained in accordance with manufacturers' instructions and subject to an annual safety load test to ensure that the device functions correctly.

Only personnel approved by Yewdale will be authorised to install the anti-ligature Cubicle Track System but the subsequent annual testing of the System will be carried out by Protects Plus. Approved installers will have a certificate confirming they have undertaken the training provided by Yewdale on an annual basis.

Due to the fact that there are many policies set out to protect the NHS and the healthcare providers, Yewdale as a manufacturer provides full training for installers of the System. The anti-ligature Cubicle Movatrack system can only be installed if installer has undergone the Kestrel training course and passed the examination. Approved installers will have a certificate confirming they have undertaken the training provided by Yewdale and this is updated on an annual basis. The subsequent annual testing of the System will be carried out by Protects Plus.

## Technical & Safety

Research has identified that people are at the greatest risk of death by ligature in areas of mental health hospital environments, in prison and in detention centres. Service users in these areas have a tendency to be overly irrational in their behaviour and hence need an especially high level of care. Ligature points can be formed from a variety of innocuous items commonly found in a room, and so great care needs to be taken when a room is being designed and the anti-ligature items, such as the System, are being specified.

The System is designed to separate from its magnetic brackets when excessive weight is applied. They are easily reattached after such separation in order to keep the System functioning fully.

The System has been in use in mental health environments as a permanent feature for well over 20 years throughout the UK and the global healthcare sector. The System lends itself to bespoke requirements of varied environments.



## The YewdaleKestrel® Anti-Ligature Load Options

There may be some instances where a standard YewdaleKestrel® magnet may not have a breakaway point low enough to ensure the safety of service users with lighter body-weights.

In situations involving children, adolescents and people with illnesses such as eating disorders, their body weight may not be great enough to easily break a ligature point, and so YewdaleKestrel® offers low and medium load capacity brackets that separate at much smaller weights.

All products will automatically be supplied with our standard load brackets, please specify when ordering if you require the medium or low load brackets. All accompanying disks are chamfered to help prevent jams.

Consideration from installers must be applied to the types of anti-ligature product being used and how it will be used on a daily basis as lower load brackets may cause it to separate too easily and make it very difficult to use the product for its primary function.

Therefore, it is recommended that the pre-load weight of the anti-ligature product is understood before the brackets are selected for the environment as some anti-ligature devices could have an even further reduced load capacity. For example, anti-ligature curtain tracks may separate too easily if the curtain weight isn't accounted for.

### Risk Assessments Needed

All environments need to be risk-assessed by the Trust before installation as our listed load capacities are recommendations and guides and should be tested by the appropriate parties prior to installation. The break points listed can vary and the figures are a result of an average break-point weight found through testing.

### Standard load bracket

Our standard strength bracket which features across the board as the default magnet and disk combination. We use our standard strength magnet housed within a bracket and a large chamfered disk (KD4S) on the product. The breakaway load for a standard load bracket is approximately 20kg per bracket/magnet.



### Medium load bracket

The medium load bracket uses a standard strength magnet with a small chamfered disk (KD5S), the reduced surface area of the disk lessens the maximum weight needed to separate the device. The breaking point for this bracket is approximately 17kg per bracket/magnet.



### Low load bracket

The low load bracket features a magnet with lower magnetism than the above and it is paired with a large chamfered disk (KD4S). This gives the device a breaking point of approximately 13kg per bracket. The lower weight magnets are coloured black for easy recognition.



## YewdaleKestrel® magnet options and system compatability table:

Please see below for further details of which of our systems can accomodate the standard, medium and low load magnet options. For more advice, please contact your account manager.

System	Standard load brackets (20kg)	Medium load brackets (17kg)	Low load brackets (13kg)
SafeDoor	✓	X	X
K09AW	✓	X	✓
K09BW	✓	X	✓
K09CW	✓	X	✓
K505PW	✓	X	✓
K509PW	✓	X	✓
K510	✓	X	✓
K511	✓	X	✓
K514	✓	X	✓
K515	✓	X	✓
K516	✓	X	✓
K512	✓	X	✓
K512PW	✓	X	✓
K504	✓	X	✓
K508	✓	X	✓
K530	✓	X	✓
K530-10	✓	X	✓
K530-15	✓	X	✓
K100	✓	X	X
K6200	✓	X	✓
K9500	✓	X	✓
KR20	✓	X	✓
KR20C	✓	X	✓
KR20S	✓	X	✓
KVL31	✓	X	✓

All YewdaleKestrel® solutions are carefully built to exacting standards, giving years of trouble-free service. The superior design features and quality components enable them to be confidently specified for the most demanding environments.

The YewdaleKestrel® system features vandal-resistant controls and mechanisms, and are frequently seen in hospitals, institutions, care homes, prisons and private detention centres.

The YewdaleKestrel® fail-safe\* programme is one of the most comprehensive available, ranging from multiple bay, curtain divider tracks for privacy to individual coat hooks for convenience.

The YewdaleKestrel® system is available through a nationwide network of distributors and customers, with trained and accredited installation and service teams providing an unrivalled level of support.





## YewdaleKestrel® SafeDoor 2

### Features:

Although the SafeDoor 2 may look different, it is backed by the same safety features as our original SafeDoor, with a number of enhancements. This load release anti-ligature en-suite door continues to use our trusted load release magnets for guaranteed break away, whilst offering additional benefits including a higher fire rating and added defence against tampering.

### Benefits:

For added security and long-term durability, the door's welds are sewn with armoured stitching.

Improved fire retardant properties adhere to strict fire prevention guidelines (Crib 7 fire rating – BS 5852: 2006)

The SafeDoor 2 has an attractive curved profile that is just 9mm thick, making it lighter than our first SafeDoor. The soft foam door poses minimal risk of injury and greatly reduces the risk of the door being damaged.

The fibreglass material ensures the image is vastly improved, long-lasting and a lot harder to puncture. Maintains service user privacy and dignity whilst allowing observational checks.

Single or double-sided print available, facilitating the introduction of calming images on a durable, wipe-clean surface. Water-resistant materials that are ideal for en-suites. We offer a fast turnaround time of 5 to 7 business days.

### Options:

- Self-closing patented hinge
- Left hand or right-hand hinge mounted
- Colour/image of your choice
- Single or double-sided print

### Specification:

The magnetic anti-ligature YewdaleKestrel® SafeDoor 2 for en-suites with vandal resistant, soft foam core as manufactured by Yewdale, +44 (0)1268 570900. Manufactured from flame retardant fabric, constructed using anti-pick, tamper resistant materials, welded and sewn pockets, and incorporating Biosafe antibacterial formula to withstand vigorous daily use in hospital and mental health environments. The 4kg tear/stain resistant door is anti-static and will fall away from its magnetic fixing plates when subjected to a load greater than 9kgs.

For more information on the YewdaleKestrel® Policy, please turn to page 6.

### Safety Note

Sensitive electronic equipment may be damaged by proximity to a magnetic field and should not come within 150mm of the underside of the brackets. Any load-release device, by its nature, may cause damage when operated. Articles suspended from the YewdaleKestrel® magnetic anti-ligature system will come down when pulled.

YewdaleKestrel® products are designed as standalone products only. Care should be taken when assessing or arranging a room to ensure that YewdaleKestrel® products cannot be misused in conjunction with any other item, furniture or fixings in the room. It is the responsibility of the end user or client to ensure the product is suitable for the environment it is being installed in. YewdaleKestrel® products must be fitted by a qualified professional following the manufacturer's instructions. Failure to do so could jeopardise the product's effectiveness as an anti-ligature system.

**Three year warranty as standard. SafeDoor 2 is excluded from the lifetime warranty.**

YewdaleKestrel® products are only to be used with Yewdale approved products. If you require any anti-ligature accessory not shown on these pages, please enquire. We may be able to help.



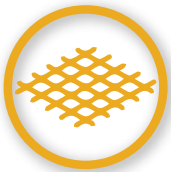
Sleek modern design only  
9mm thick and curved



Crib 7 fire rating  
BS 5852:2006



Single or double  
sided print



Fabric is reinforced  
by fibreglass



Armoured stitching  
provides enhanced  
tamper-resistance



Find this  
product on  
NBS Source





## YewdaleKestrel® SafeDoor Plus Connect

### Features:

The new SafeDoor Plus Connect features a patent-pending design where the magnets are permanently fixed to the door frame. The purpose of the new door is to provide a load-release ensuite door with magnets fixed to eliminate the possibility of the magnets being misused.

- Fail-safe anti-ligature magnets
- Patent-pending hinge design
- Anti-tamper design with armour stitching
- The magnets cannot be removed and used to interfere in other locking systems in the building

### Benefits:

The key advantage of this new design is that the magnets cannot be removed without equipment that service users will not be able to access. This eliminates the possibility of these magnets being misused.

Our load-release magnets cannot be jammed and retain their magnetic force indefinitely.

The pliable soft foam door presents minimal risk of injury and significantly diminishes the chances of door damage.

We can provide custom print and various widths to suit your needs.

Easy to retrofit within a doorway.

Enhanced fire-retardant properties are in accordance with stringent fire prevention standards (Crib 7 fire rating – BS 5852: 2006).

The anti-ligature door has a cut-out handle and boasts an appealing curved profile, measuring 9mm in thickness.

The fiberglass material ensures durability and resistance against penetration by common objects.

It upholds the privacy and dignity of service users while permitting observation checks.

You can opt for single or double-sided printing, enabling the incorporation of soothing images on an easy-to-clean surface. Reports indicate that double-sided printing reduces vandalism because there isn't a blank side to draw on.

The water-resistant materials make it well-suited for ensuites.

We provide a rapid turnaround time of 5 to 7 business days.

### Options:

- Left hand or right-hand hinge mounted
- Colour/image of your choice
- Single or double-sided print
- Saloon-style double doors

### Specification:

The magnetic anti-ligature YewdaleKestrel® SafeDoor Plus Connect for ensuites with vandal resistant, soft foam core as manufactured by Yewdale, +44 (0)1268 570900. Manufactured from flame retardant fabric, incorporating an anti-tamper design with dual access protection including armour stitching, and including Biosafe antibacterial formula to withstand vigorous daily use in hospital and mental health environments. The tear/stain resistant door is anti-static and will fall away from its magnetic fixing plates when subjected to a load greater than 9kgs.

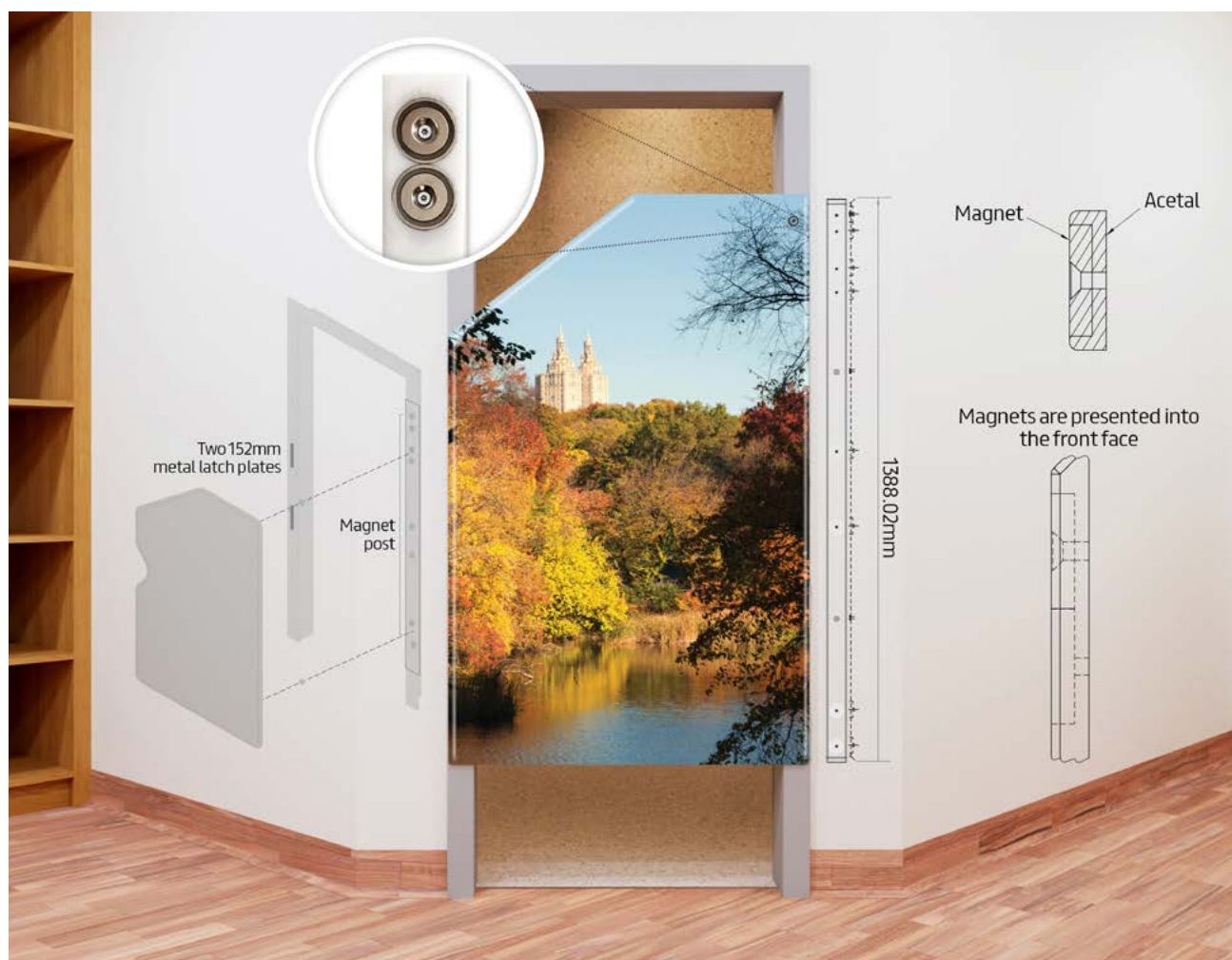


For more information on the YewdaleKestrel® Policy, please turn to page 6.

### Safety Note:

The minimum width of architrave or surface the magnet plate will be fitted to must be at least 60mm. Sensitive electronic equipment may be damaged by proximity to a magnetic field and should not come within 150mm of the underside of the brackets. Any load-release device, by its nature, may cause damage when operated. Articles suspended from the YewdaleKestrel® magnetic anti-ligature system will come down when pulled.

YewdaleKestrel® products are designed as standalone products only. Care should be taken when assessing or arranging a room to ensure that YewdaleKestrel® products cannot be misused in conjunction with any other item, furniture or fixings in the room. It is the responsibility of the end user or client to ensure the product is suitable for the environment it is being installed in. YewdaleKestrel® products must be fitted by a qualified professional following the manufacturer's instructions. Failure to do so could jeopardise the product's effectiveness as an anti-ligature system.





## YewdaleKestrel® SafeDoor Plus

### Features:

An anti-ligature ensuite door that's designed to make cleaning easier, help stop the spread of infection, and meet the demands of Infection Prevention and Control (IPC). It features a welded seam without any trim, stitching, pockets or holes for dirt to accumulate. Certified as Crib 7 fire-rated, SafeDoor Plus complies with strict fire prevention guidelines in mental health facilities and other complex care settings

- Developed and approved in line with NHS IPC
- Made in our UK factory in only 5 days
- Printing, image or pattern of your choice
- Lifetime warranty
- We can adjust the breakaway load to suit your patient group
- Self-closing hinge

### Benefits:

Produced in our UK factory, we provide a production lead time of just 5 days.

Designed and approved in line with NHS IPC, proving this door complies to the highest standards.

Orders are delivered safely and quickly using our own delivery vans.

The Biosafe® antimicrobial formula, welded seam and exclusion of stitching make the new SafeDoor more hygienic and easier to clean.

Supplied as standard, if a load greater than 9kg is exerted on the door, it will breakaway. We can also offer the breakaway of 12kg, depending on your requirements. The magnets ensure the door can quickly be put back in place.

Anti-ligature magnets are sewn and fixed to armoured sleeve within the door's hinge and cannot be removed.

SafeDoor Plus is also available in our patent-pending Connect fixed magnet hinge post. This is where the magnets are fixed to the doorframe, removing the magnets from the door.

The door is made of flexible fire quilt to remove weapons risk and the likelihood of damage.

This product is easily installable in existing doorways.

Supplied as standard with our patented self-closing hinge for the door.

Backed by a lifetime warranty for peace of mind.

It's water-resistant and has advanced fire-resistant qualities, meeting the rigorous fire safety standards of Crib 7 fire rating as per BS 5852: 2006.

Constructed from high-quality fabric that is durable and resistant to penetration by common objects.

The profile of the door protects privacy and dignity while allowing for necessary observation.

Standard double-sided printing often reduces vandalism due to the absence of a blank side to draw on.

The prints, which can be customised and come in various widths, feature soothing images, patterns or prints of your choice on an easy-to-clean surface.

### Options:

• SafeDoor Plus Connect patent-pending hinge (magnets are permanently fixed to the door opening with anti-tamper fixings, meaning only metal discs in door)

- 9kg or 12kg load release
- Left hand or right-hand hinge mounted
- Colour/image of your choice

**YewdaleKestrel® products are only to be used with Yewdale approved products. If you require any anti-ligature accessory not shown on these pages, please enquire. We may be able to help.**



Welded Seam and includes no trim or stitching



Easy to clean and maintain, reducing time for staff



Fail-safe anti-ligature magnets detach under a load in excess of 9kg or 12 kg



5 days lead time



Crib 7 fire rating and fully waterproof



Option for Connect fixed magnet design



Patented self closing hinge



Made in the UK:



For more information on the YewdaleKestrel® Policy, please turn to page 6.

- Single or double-sided print
- Saloon-style double doors
- 6 sizes available

### Specification:

The magnetic anti-ligature YewdaleKestrel® SafeDoor Plus is a load release ensuite door. It is a flexible printed door to provide privacy and dignity for the service user. The door provides ultimate safety with minimal weapon and ligature risk. Crib 7 fire rated and can be printed with image or colour of choice and cleaned with all standard cleaning requirements. Designed with no pockets or areas that can trap dirt, edges are smooth meaning cleaning and maintenance is very simple. No areas where infection can't be reached and cleaned. Door is manufactured in UK by Yewdale, lead time from 5 working days. Doors are made to suit your door opening.

Please note that due to the flexible nature of the product and the glue and fabric used during the production process, it is possible that SafeDoor Plus may develop some ripples or bubbles on its surface. This is completely normal and does not indicate that the product is faulty or damaged.

### O+M Guidance

To maintain the quality of our product, we advise routine cleaning as needed. Please use either Anti-Chlor solutions or conventional cleaning supplies for this purpose. It is important to avoid the use of any sharp objects during the cleaning process to prevent damage.

All installations require a commission pull test to be carried out and recorded and copy given to the client to sign off the installation.

For full compliance and product warranty, annual inspection and load testing of YewdaleKestrel® systems should be carried out by Protects Plus 0345 646 0955. If testing is carried out by others the liability would remain with them and/or the healthcare provider and any warranty is void.

### Safety Note

The minimum width of architrave or surface the magnet plate will be fitted to must be at least 60mm. Sensitive electronic equipment may be damaged by proximity to a magnetic field and should not come within 150mm of the underside of the brackets. Any load-release device, by its nature, may cause damage when operated. Articles suspended from the YewdaleKestrel® magnetic anti-ligature system will come down when pulled.

YewdaleKestrel® products are designed as standalone products only. Care should be taken when assessing or arranging a room to ensure that YewdaleKestrel® products cannot be misused in conjunction with any other item, furniture or fixings in the room. It is the responsibility of the end user or client to ensure the product is suitable for the environment it is being installed in. YewdaleKestrel® products must be fitted by a qualified professional following the manufacturer's instructions. Failure to do so could jeopardise the product's effectiveness as an anti-ligature system.



Find this product on NBS Source



## YewdaleKestrel® SafeArt

### Features:

SafeArt allows mental health trusts to display calming images without creating ligature points. Available in 6 sizes, SafeArt is constructed from soft foam. The product mounts to most surfaces via load release magnets which separate from the wall when subjected to a load greater than 9kgs.

### Benefits:

Choose from a range of vibrant, calming images intended to reduce anxiety and increase comfort. The soft foam is reinforced by fibreglass, which adds strength and ensures the print quality is exceptional and long-lasting.

The load release magnets are securely sewn into tamper-resistant pockets located on the rear of the product. A stainless steel mounting plate is fitted to the wall, providing the magnets with a fixing point.

The 3mm thick mounting plate cannot be removed from the wall without specific tools and features rounded edges to prevent ligature risk. Due to the magnetic fixing, SafeArt is interchangeable. Different SafeArts can be swapped within a building to introduce new images to various areas. The soft foam material poses minimal risk of injury and ensures the product will not sustain damage if it falls. Anti-microbial (BioSafe) material is fire resistant and easily cleaned.

### Options:

Small, medium and large artwork sizes are available.

Small:

305mm x 305mm or 457mm x 457mm

Medium:

610mm x 610mm or 610mm x 762mm

Large:

915mm x 915mm or 915mm x 1067mm

### Specification:

The magnetic anti-ligature YewdaleKestrel® SafeArt with vandal resistant, soft foam core as manufactured by Yewdale, +44 (0)1268 570900. Manufactured from flame retardant fabric, constructed using anti-pick, tamper resistant materials, and incorporating Biosafe antibacterial formula to withstand vigorous daily use in hospital and mental health environments. The tear/stain resistant SafeArt is anti-static and will fall away from its magnetic fixing plates when subjected to a load greater than 9kgs.

For more information on the YewdaleKestrel® Policy, please turn to page 6.

### Safety Note:

Sensitive electronic equipment may be damaged by proximity to a magnetic field and should not come within 150mm of the underside of the brackets. Any load-release device, by its nature, may cause damage when operated. Articles suspended from the YewdaleKestrel® magnetic anti-ligature system will come down when pulled.

YewdaleKestrel® products are designed as standalone products only. Care should be taken when assessing or arranging a room to ensure that YewdaleKestrel® products cannot be misused in conjunction with any other item, furniture or fixings in the room. It is the responsibility of the end-user or client to ensure the product is suitable for the environment it is being installed in. YewdaleKestrel® products must be fitted by a qualified professional following the manufacturer's instructions. Failure to do so could jeopardise the product's effectiveness as an anti-ligature system.



## K09 Mounting plates

### Features:

Many items may be converted to anti-ligature status by mounting them on YewdaleKestrel® mounting plates. Available in three sizes, the plates are held vertically against the wall solely by the magnetic attraction of the YewdaleKestrel® brackets hidden behind them.

### K09AW

70 x 155mm, with 1 bracket.  
Suitable for toilet roll holders, etc.

### K09BW

190 x 335mm, with 2 brackets.  
Suitable for soap dispensers, etc.

### K09CW

330 x 470mm, with 2 brackets.  
Suitable for towel dispensers, etc.

### Specification:

YewdaleKestrel® K09A/B/CW Mounting plates as manufactured by Yewdale, +44 (0)1268 570900, with YewdaleKestrel® Magnetic Anti-Ligature System.

For more information on the YewdaleKestrel® Policy, please turn to page 6.



## K08 Fixed Mounting plates

### Features:

Many items can be mounted on YewdaleKestrel® mounting plates. For larger accessories that can be used as a weapon, the mounting plate can be fixed to the wall. The accessory is held against the mounting plate solely by magnets on the mounting plate and fitted to the back of the accessory. Medium and large plates are available for larger items. K08BW has a load release of 20kg, whilst the K08CW has a load release of 40kg. Testing certificate available on request.

### K08BW

190 x 330, with 1 bracket.  
Suitable for toilet roll holders, etc.

### K08CW

330 x 470, with 2 brackets.  
Suitable for soap dispensers, etc.

### Specification:

YewdaleKestrel® K08 Fixed Mounting plates as manufactured by Yewdale, +44 (0)1268 570900, with YewdaleKestrel® Magnetic AntiLigature System.

For more information on the YewdaleKestrel® Policy, please turn to page 6.



## K515 Polycarbonate mirror

### Features:

The YewdaleKestrel® K515 anti-ligature polycarbonate mirror is designed to be virtually indestructible. Having the same dimensions as a K09CW mounting plate (330 x 470mm) and incorporating 2 magnetic fixing points (included).

### Specification:

The magnetic anti-ligature YewdaleKestrel® K515 Polycarbonate mirror as manufactured by Yewdale, +44 (0)1268 570900. Anti-shatter construction complete with magnetic brackets to allow mirror unit to part from brackets under excessive load.



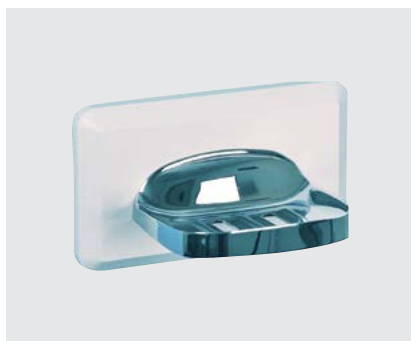
## K516 Wipe board

### Features:

The YewdaleKestrel® K515 anti-ligature wipe board offers a notice board solution for all anti-ligature environments. Having the same dimensions as a K09CW (330 x 470mm) mounting plate and incorporating two magnetic fixing points (included).

### Specification:

The magnetic anti-ligature YewdaleKestrel® K515 Wipe board as manufactured by Yewdale, +44 (0)1268 570900. Anti-shatter construction complete with magnetic brackets to allow board to part from brackets under excessive load.



## K512 Soapdish

### Features:

The YewdaleKestrel® K512 anti-ligature soap dish is manufactured from steel with a polished satin finish. Mounted to a high quality moulded polycarbonate K09AW (70 x 155mm) YewdaleKestrel® mounting plate (included).

### Specification:

The magnetic anti-ligature YewdaleKestrel® K512 Soap dish in satin polished steel as manufactured by Yewdale, +44 (0)1268 570900. Anti-shatter construction complete with magnetic brackets to allow plate to part from bracket under excessive load.



## K512PW Soap dish

### Features:

The YewdaleKestrel® K512 anti-ligature soap dish is manufactured from high grade plastic. Mounted to a high quality moulded polycarbonate K09AW (70 x 155mm) YewdaleKestrel® mounting plate (included).

### Specification:

The magnetic anti-ligature YewdaleKestrel® K512 Soap dish in white plastic as manufactured by Yewdale, +44 (0)1268 570900. Anti-shatter construction complete with magnetic brackets to allow plate to part from bracket under excessive load.

For more information on the YewdaleKestrel® Policy, please turn to page 6.



## K505PW Shower head holder

### Features:

The YewdaleKestrel® K505PW magnetic shower head holder provides another anti-ligature solution for an area that may otherwise be difficult to monitor. High grade swivelling plastic provides support for many positions mounted to a high quality moulded polycarbonate K09AW (70 x 155mm) YewdaleKestrel® mounting plate (included).

### Specification:

The magnetic anti-ligature YewdaleKestrel® K505PW shower head holder as manufactured by Yewdale, +44 (0)1268 570900. Lightweight, anti-shatter construction complete with magnetic brackets to allow plates to part from brackets under excessive load.



## K509PW Toilet roll holder

### Features:

The YewdaleKestrel® K509PW magnetic toilet roll holder provides another anti-ligature solution for an area that may otherwise be difficult to monitor. High grade, lightweight swivelling plastic holder securely holds one toilet roll. Mounted on a high quality moulded polycarbonate K09AW (70 x 155mm) YewdaleKestrel® mounting plate.

### Specification:

The magnetic anti-ligature YewdaleKestrel® K509PW toilet roll holder as manufactured by Yewdale, +44 (0)1268 570900. Lightweight, anti-shatter polycarbonate construction complete with magnetic brackets to allow plates to part from brackets under excessive load.



Plastic Dispenser Available

## K510 Soap dispenser

### Features:

The durable, high quality YewdaleKestrel® K510 stainless steel dispenser has non-drip, one shot action. Mounted to a high quality moulded polycarbonate K09BW (190 x 335mm) YewdaleKestrel® mounting plate.

### Specification:

The magnetic anti-ligature YewdaleKestrel® K510 soap dispenser as manufactured by Yewdale, +44 (0)1268 570900. Satin stainless steel dispenser with non-drip, one shot action mounted to YewdaleKestrel® moulded backing plate, complete with magnetic brackets to allow plate to part from brackets under excessive load.



Plastic Dispenser Available

## K511 Paper towel dispenser

### Features:

The durable, high quality YewdaleKestrel® K511 lockable stainless steel dispenser has a stock level indicator window. Mounted to a high quality moulded polycarbonate K09CW (330 x 470mm) YewdaleKestrel® mounting plate.

### Specification:

The magnetic anti-ligature YewdaleKestrel® K511 paper towel dispenser as manufactured by Yewdale, +44 (0)1268 570900. Satin stainless steel dispenser for C-fold/multi-fold towels with lock, mounted to YewdaleKestrel® moulded backing plate, complete with magnetic brackets to allow plate to part from brackets under excessive load.

For more information on the YewdaleKestrel® Policy, please turn to page 6.

YewdaleKestrel® products are only to be used with Yewdale approved products. If you require any anti-ligature accessory not shown on these pages, please enquire. We may be able to help.



## K504 Towel rail

### Features:

The YewdaleKestrel® K504 clear towel rail provides a convenient towel drying facility in an otherwise anti-ligature environment. The 500mm rail and its holders will part from the brackets to allow 100% fail-safe\* solution under excessive load.

### Specification:

The magnetic anti-ligature YewdaleKestrel® K504 towel rail as manufactured by Yewdale, +44 (0)1268 570900. Lightweight, clear polycarbonate construction complete with holders and magnetic wall-fix brackets to allow rail to part from brackets under excessive load.



## K530 Wardrobe rail

### Features:

The YewdaleKestrel® K530 clear wardrobe rail provides a convenient garment hanging facility in an otherwise anti-ligature environment. The rail, including the brackets (500mm; or K530/10 - 1000mm; or K530/15 - 1500mm) and its holders will part from the brackets to allow a 100% fail-safe\* solution under excessive load.

### Specification:

The magnetic anti-ligature YewdaleKestrel® K530 wardrobe rail as manufactured by Yewdale, +44 (0)1268 570900. Lightweight, clear polycarbonate construction complete with holders and magnetic top-fix brackets to allow rail to part from brackets under excessive load.



## K508 Flexible coat hook

### Features:

The YewdaleKestrel® K508 flexible coat hook has been developed in response to repeated requests from hospital staff. This hook is as strong as a standard coat hook in normal use, yet gives NO point of ligature.

### Specification:

The magnetic anti-ligature YewdaleKestrel® K508 flexible coat hook as manufactured by Yewdale, +44 (0)1268 570900. 2-part white plastic construction complete with hook from special pliable formulation and magnetic wall-fix bracket to allow hook to part from bracket under excessive load.



## K514 Shelf Set

### Features:

The YewdaleKestrel® K514 anti-ligature magnetic shelf is constructed from durable, shatter-proof polycarbonate with holes for individual item placement. The 270mm x 140mm shelf is mounted to two wall-fix brackets for a fully fail-safe\* solution.

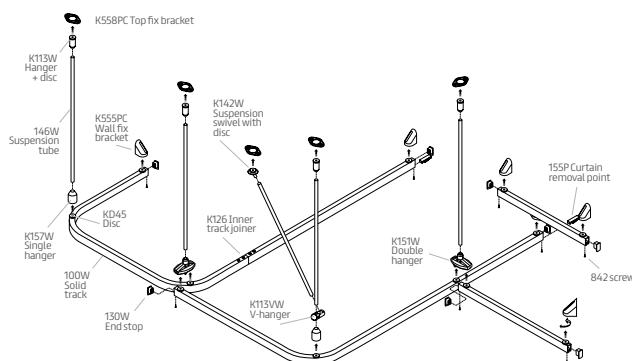
### Specification:

The magnetic anti-ligature YewdaleKestrel® K514 Shelf set as manufactured by Yewdale, +44 (0)1268 570900. Clear robust polycarbonate construction, mounted to two YewdaleKestrel® magnetic brackets to ensure shelf consistently parts from brackets under excessive load.

For more information on the YewdaleKestrel® Policy, please turn to page 6.

# YewdaleKestrel® Cubicle Curtain Tracks

YewdaleKestrel® Cubicle Curtain Tracks



## K100 Cubicle curtain tracks

### Features:

The rigid, high-grade aluminium track section and wheeled roller hooks are just an introduction to the many features of the YewdaleKestrel® K100 Cubicle Curtain Tracks, which is in use in many hospitals globally. Designed to give years of trouble-free service and specifically for high-risk mental health areas, this curtain divider track system uses magnetic wall-fix brackets where tracks meet the wall, and magnetic top-fix brackets where suspension hangers meet the ceiling. This ensures that, under excess load, the suspension hanger separates from the ceiling bracket leaving no remaining points of ligature - a highly essential safety feature, as it is surprisingly easy to attach a cord to a fixed vertical rod and use it as a ligature point. Supplied with a curtain removal point as standard.

### Benefits:

Strength and simplicity make the K100 the first choice for a full number of applications. The premium quality track system has a strong and attractive aluminium profile which offers you more for less, in that it is able to span 2.5 metres between hangers, providing long term reliability. In a similar fashion, curtain removal points are provided as standard on every track for added convenience when replacing curtains. The self-lubricating roller runner hooks are quickly loaded into the track through this point of access. Mounted on magnetic brackets for 100% fail-safe\* anti-ligature functionality. Complies fully with the requirements of HBN 00-10 Part E.

### Options:

Silver anodised track; Any RAL colour available to order; Biosafe® antibacterial treatment option available within white powder-coated finish only.

### Specification:

The magnetic anti-ligature YewdaleKestrel® K100 Cubicle Curtain Track system as manufactured by Yewdale, +44 (0)1268 570900. Track manufactured from premium quality aluminium with silver anodised / white powder-coated finish, able to span 2.5 metres without support. Double hangers to ensure full functionality of system. Complete with roller runner hooks at 10 per metre, curtain removal points per section and magnetic wall-fix/top-fix brackets, and overlaps as necessary, spaced in accordance with manufacturer's recommendations. Fitting to be carried out by trained and accredited personnel.

**YewdaleMovatrack® is the only approved curtain divider track system to be used with YewdaleKestrel®**

For more information on the YewdaleKestrel® Policy, please turn to page 6.



Find this product on NBS Source

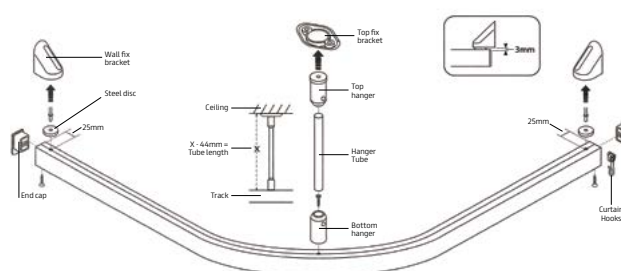
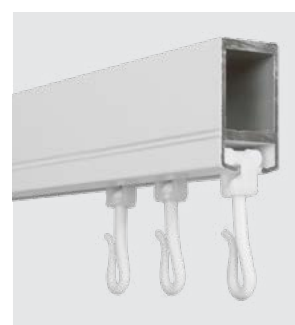


A lifetime warranty applies to YewdaleMovatrack® cubicle tracks when used in conjunction with YewdaleHarrier® curtains. A 5 year warranty applies when used with alternative curtains.



### We've pulled together a top range of curtains!

Find a matching option from the YewdaleHarrier® range. You'll find it easy to choose from, using one of our fabric selectors.



## K100 Shower track

### Features:

The rigid, high-grade aluminium track section and wheeled roller hooks are just an introduction to the YewdaleKestrel® K100 shower track system. Designed to give years of trouble-free service and specifically for high-risk mental health areas, this shower track system uses magnetic wall-fix brackets where tracks meet the wall, and magnetic top-fix brackets where suspension hangers meet the ceiling. This ensures that, under excess load, the suspension hanger separates from the ceiling bracket leaving no remaining points of ligature - a highly essential safety feature, as it is surprisingly easy to attach a cord to a fixed vertical rod and use it as a ligature point.

### Benefits:

Strength and simplicity make the K100 the first choice for a full number of applications. The premium quality track system has a strong and attractive aluminium profile which offers you more for less, in that it is able to span 2.5 metres between hangers, providing long term reliability. In a similar fashion, curtain removal points are provided as standard on every track for added convenience when replacing curtains. The self-lubricating roller runner hooks are quickly loaded into the track through this point of access, making the process a pleasurable experience. Mounted on magnetic brackets for 100% fail-safe\* anti-ligature functionality.

### Options:

Silver anodised track; Any RAL colour available to order; Biosafe® antibacterial treatment option available within white powder-coated finish only.

### Specification:

The magnetic anti-ligature YewdaleKestrel® K100 shower track system as manufactured by Yewdale, +44 (0)1268 570900. Track manufactured from premium quality aluminium with white powder-coated finish. Complete with roller runner hooks at 10 per metre, and magnetic wall-fix/top-fix brackets spaced in accordance with manufacturer's recommendations. Fitting to be carried out by trained and accredited personnel.

**YewdaleMovatrack® is the only approved shower track system to be used with YewdaleKestrel®**

For more information on the YewdaleKestrel® Policy, please turn to page 6.



Find this product on NBS Source



A lifetime warranty applies to YewdaleMovatrack® cubicle tracks when used in conjunction with YewdaleHarrier® curtains. A 5 year warranty applies when used with alternative curtains.



### We've pulled together a top range of curtains!

Find a matching option from the YewdaleHarrier® range. You'll find it easy to choose from, using one of our fabric selectors.

# YewdaleKestrel® Window Curtain Tracks

YewdaleKestrel® Window Curtain Tracks



BIM model  
available



## K6200 Window curtain track

### Features:

The YewdaleKestrel® K6200 window curtain track is a white powder-coated aluminium track which is lightweight yet strong, and with roller runners, is ideally suited for ease of use in all hand-drawn curtain applications. Tests have shown that for anti-ligature purposes it is most important that the complete track collapses leaving no point of ligature. Even where a fixed track provides no ligature points, heavy weights can be suspended from the curtains which in turn is a serious potential risk. With the K6200 the track and curtain together will part from the YewdaleKestrel® brackets under abnormal load and can then be simply and quickly reinstated.

### Benefits:

Constructed of a robust aluminium profile ensuring a consistently high level of performance, the K6200 makes an excellent choice for medium to heavy curtain usage. Offering both wall-fix and top-fix options to blend in well with any environment whilst remaining pleasing to the eye, this white powder-coated window curtain track with special low friction roller runners satisfies the most demanding of environments, whether it be residential or commercial. Secured by magnetic brackets for 100% fail-safe\* anti-ligature functionality and in use in many mental health environments worldwide.

### Specification:

The magnetic anti-ligature YewdaleKestrel® K6200 hand drawn window curtain track as manufactured by Yewdale, +44 (0)1268 570900. Aluminium track with white powder-coated finish. Incorporating low friction roller runners at 16 per metre and magnetic wall-fix or top-fix brackets as necessary, spaced in accordance with manufacturer's recommendations. Fitting to be carried out by trained and accredited personnel.

**YewdaleKestrel® K6200 is the only approved window curtain track system to be used with YewdaleKestrel®**

For more information on the YewdaleKestrel® Policy, please turn to page 6.



This product range comes with a full Lifetime Warranty as standard.



Find this product on NBS Source

Width Inches	Width mm	No. of Brackets
39 <sup>1</sup> / <sub>2</sub>	1000	2
47 <sup>1</sup> / <sub>4</sub>	1200	2
55	1400	3
63	1600	3
71	1800	3
78 <sup>3</sup> / <sub>4</sub>	2000	3
86 <sup>3</sup> / <sub>4</sub>	2200	3
94 <sup>1</sup> / <sub>2</sub>	2400	4
102 <sup>1</sup> / <sub>4</sub>	2600	4
110 <sup>1</sup> / <sub>4</sub>	2800	4
118	3000	4
126	3200	4
134	3400	5
141 <sup>3</sup> / <sub>4</sub>	3600	5
149 <sup>1</sup> / <sub>2</sub>	3800	5
157 <sup>1</sup> / <sub>2</sub>	4000	5
165 <sup>1</sup> / <sub>4</sub>	4200	5
173 <sup>1</sup> / <sub>4</sub>	4400	6
181	4600	6
189	4800	6
196 <sup>3</sup> / <sub>4</sub>	5000	6



BIM model  
available



## K9500 Flexible window curtain track

### Features:

The YewdaleKestrel® K9500 flexible window curtain track has been developed in response to UK Government requirements and is constructed from a specially formulated plastic which is lightweight and strong, and utilises self-lubricating gliders for ease of use in all hand-drawn curtain applications. Tests have shown that for anti-ligature purposes it is most important that the complete track collapses leaving no point of ligature. Even where a fixed track provides no ligature points, heavy weights can be suspended from the curtains which in turn is a serious potential risk. With the K9500 the track and curtain together will part from the YewdaleKestrel® brackets under abnormal load and can then be simply and quickly reinstated. Only for use with lightweight curtains and where the risk of violence precludes the use of the standard K6200 aluminium track.

### Benefits:

Developed from a specially formulated plastic construction the K9500 is specially designed to be flexible enough to prevent its use as a weapon by prisoners or violent psychiatric patients, and shatter resistant to reduce the risk of sharp edges. Suitable for lightweight curtain usage, and an excellent alternative to aluminium tracks when the threat of violence restricts usage of metal products. Offering both wall-fix and top-fix options to blend in well with any environment whilst remaining pleasing to the eye, this white flexible plastic window curtain track with special low friction gliders satisfies the most demanding of environments, whether it be residential or commercial. Secured by magnetic brackets for 100% fail-safe\* anti-ligature functionality and in use in many mental health environments worldwide.

### Specification:

The magnetic anti-ligature YewdaleKestrel® K9500 flexible hand drawn window curtain track as manufactured by Yewdale, +44 (0)1268 570900. White plastic track of special flexible plastic formulation complete with gliders at 16 per metre and magnetic wall-fix or top-fix brackets as necessary, spaced in accordance with manufacturer's recommendations. Fitting to be carried out by trained and accredited personnel.

**YewdaleKestrel® K9500 is the only approved flexible window curtain track system to be used with YewdaleKestrel®**

For more information on the YewdaleKestrel® Policy, please turn to page 6.

Width Inches	Width mm	No. of Brackets
19 <sup>3/4</sup>	500	2
35 <sup>1/2</sup>	900	3
51	1300	4
67	1700	5
82 <sup>3/4</sup>	2100	6
98 <sup>1/2</sup>	2500	7
114	2900	8
130	3300	9
145 <sup>1/2</sup>	3700	10



This product range comes with a full Lifetime Warranty as standard.



Find this product on NBS Source

# YewdaleKestrel® Safety Window Curtain Tracks



## K2500 Safety window curtain track

### Features:

The K2500 fixed curtain track reduces the risk of ligature and violence, making it ideal for health settings, care homes and detention centers. Designed with safety in mind, it fits flush to the wall, eliminating the risk of its use as a weapon. The premium aluminum track comes as standard in white with rounded end brackets. Pin hex anti-tamper security screws are secured into countersunk fixing holes at 150mm intervals to provide a tight fit to the wall or ceiling. Supplied with 16 anti-ligature gliders per meter for a smooth curtain pull.

The standard installation uses a mixture of heavy-duty and low-weight gliders, creating a release weight of 12kg to 17kg, 18kg to 24kg and 30kg to 36kg release weights are achieved by exclusively using one type of glider. When under an excess load, the curtain separates from the gliders, leaving the track and gliders securely in place. The reduced ligature curtain track is easy to install, wipe clean and requires little maintenance. Curtains are not supplied.

**\*Tests carried out using 3mm wide curtain hook.**

### Benefits:

The appropriate curtain release weight can be selected based on the individual setting's requirements. The smooth operation of the anti-ligature gliders ensures ease of use and reduces the chance of the curtain being pulled down due to heavy manual handling. The gliders stay within the track making the curtain easy to reinstall if removed. There are no large gaps between the gliders keeping the appearance of the curtain consistent. No large plastic parts can be removed from the curtain or the track, reducing the risk of self-harm.

We can bend the aluminium track to fit within bay windows and ensuite showers and cubicles, providing privacy whilst reducing the risk of ligature and weapons risk.

### Options:

Any RAL colour available to order.

Top fix available.

Top fix can be bent to shape.

### Specification:

The reduced ligature YewdaleKestrel® K2500 safety window curtain track as manufactured by Yewdale, +44 (0)1268 570900. Manufactured from powder-coated white aluminium, installed using tamper-proof screws and comes as standard with anti-ligature plastic curtain gliders (hooks to be sewn into curtains separately by third-party).

**YewdaleKestrel® K2500 is the only approved safety window curtain track system to be used with YewdaleKestrel®**

For more information on the YewdaleKestrel® Policy, please turn to page 6.



This product range comes with a full Lifetime Warranty as standard.



Find this product on NBS Source

Face fix



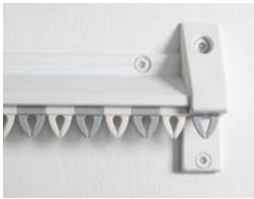
Top fix



Top fix can be curved to fit bay windows and showers

yewdale **Kestrel**<sup>®</sup>  
MAGNETIC ANTI-LIGATURE SYSTEM

Tests carried out using 3mm wide curtain hook.



**Option 1 - Standard**  
18 to 24kg load release  
with the alternating grey and  
white gliders



**Option 2 - Lowweight**  
12 to 17kg load release  
with all white gliders



**Option 3 - Heavy duty**  
30 to 36kg load release  
with all grey gliders

**K2500 Aluminium Safety Curtain Track**

inches	mm	No. Gliders
39½	1000	16
47½	1200	20
55	1400	23
63	1600	26
71	1800	29
78¾	2000	32
86¾	2200	36
94½	2400	39
102½	2600	42
110½	2800	45
118	3000	48
126	3200	52
134	3400	55
141¾	3600	58
149½	3800	61
157½	4000	64
165½	4200	68
173¾	4400	71
181	4600	74
189	4800	77
196¾	5000	80

# YewdaleKestrel® Roller Blinds

YewdaleKestrel® Roller Blinds



## KR20 Sidewinder

### Features:

The YewdaleKestrel® KR20 sidewinder roller blind incorporating Slipstream® Technology (patent pending) has a metal control chain as standard. White metal universal brackets are fitted to a white aluminium back bar for face, top or side fixing, and with 32, 40 or 45mm grooved aluminium barrel, depending on blind size and fabric weight. Fabric is locked into a groove in the barrel, and features a white plastic bottom bar as standard. The bottom bar is fabric covered at front. This system uses magnetic wall-fix/top-fix brackets. This ensures that, under excess load, the back bar separates from the bracket leaving no remaining points of ligature.

### Benefits:

Strength and simplicity make the KR20 the first choice for a vast range of applications. The choice of barrel size means that the blind is always ideally matched to window size for optimum performance. Vandal resistant features includes Slipstream®, a friction reducing technology - smooth action operation, air cooled design and double spring function - providing you with enhanced hold, exceptional long life properties and advanced chain loading. Metal control chain, fabric locked into barrel and bottom bar, and sturdy, attractive metal brackets fitted to white aluminium back bar, secured by magnetic brackets for 100% fail-safe\* anti-ligature functionality.

### Options:

32mm Slipstream® mechanisms in black, silver or brown; Plastic control chain; Alternative bottom bars including fully fabric covered in aluminium or plastic, and Tear Drop aluminium in black, silver or white; Crank operation with detachable crank handle (KR20C).

### Specification:

The magnetic anti-ligature YewdaleKestrel® KR20 sidewinder roller blind incorporating Slipstream® Technology for enhanced hold, advanced loading and exceptional long life properties as manufactured by Yewdale, +44 (0)1268 570900. Flame retardant fabric from the YewdaleDefiant® range, locked into grooved 32/40/45mm aluminium barrel along with white plastic bottom bar. Slipstream® Technology sidewinder control with metal control chain and white metal brackets fitted to white aluminium back bar, secured by magnetic wall-fix/top-fix brackets spaced in accordance with manufacturer's recommendations. Fitting to be carried out by trained and accredited personnel.

**YewdaleKestrel® KR20 is the only approved sidewinder roller blind system to be used with YewdaleKestrel®**

For more information on the YewdaleKestrel® Policy, please turn to page 6.



Find this product on NBS Source

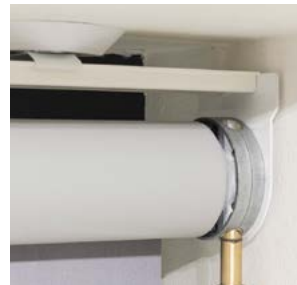
## Roller Blinds Specification Guide

Roller blinds	Min Width*	Max Width	Max Drop	Max M <sup>2</sup>
KR20	200	2050	3300	5.0

Sizes shown in millimetres. Based on fabric weight of 220g/m<sup>2</sup>, e.g. Thames. Use of heavier fabrics may require appropriate reductions. \*Where adjacent blinds are fitted with YewdaleKestrel®, there should be no more than 2 brackets within a total distance of 700mm.



This product range comes with a full Lifetime Warranty as standard.



## KR20C Crank control

### Features:

The YewdaleKestrel® KR20C crank control roller blind features a 45mm grooved aluminium barrel and white metal universal brackets for face or top fixing. A robust 1:5 crank mechanism ensures smooth blind control, and incorporates a magnetic detachable crank handle. Fabric is locked into a groove in the barrel, and features a white Tear Drop aluminium bottom bar as standard. This system uses magnetic wall-fix/top-fix brackets. This ensures that, under excess load, the back bar separates from the bracket leaving no remaining points of ligature.

### Benefits:

Durability and simplicity make the KR20C a good choice for a vast range of applications. The magnetic detachable crank ensures the blind is vandal resistant and safe for areas where cords are a threat. Fabric locked into the barrel and bottom bar, supported by sturdy, attractive metal brackets and fitted to white aluminium back bar, secured by magnetic brackets for 100% fail-safe\* anti-ligature functionality.

### Options:

Bracket covers; Alternative bottom bars including fully fabric covered

in aluminium or plastic, and aluminium Tear Drop in black or silver; Fixed crank handle.

### Specification:

The magnetic anti-ligature YewdaleKestrel® KR20C crank control roller blind with magnetic detachable crank handle as manufactured by Yewdale, +44 (0)1268 570900. Flame retardant fabric from the YewdaleDefiant® range, locked into grooved 45mm aluminium barrel along with white Tear Drop aluminium bottom bar. Robust vandal resistant 1:5 crank mechanism with pin end supported by white metal brackets and fitted to white aluminium back bar, secured by magnetic wall-fix/top-fix brackets spaced in accordance with manufacturer's recommendations. Fitting to be carried out by trained and accredited personnel.

**YewdaleKestrel® KR20C is the only approved crank control roller blind system to be used with YewdaleKestrel®**

For more information on the YewdaleKestrel® Policy, please turn to page 6.



Find this product on NBS Source

## Roller Blinds Specification Guide

Roller blinds	Min Width*	Max Width	Max Drop	Max M <sup>2</sup>
KR20C	200	2050	3300	5.0

Based on fabric weight of 220g/m<sup>2</sup>, e.g. Thames. Sizes shown in millimetres unless otherwise specified. Use of heavier fabrics may require appropriate reductions. Where adjacent YewdaleKestrel® blinds are fitted, there should be no more than 2 brackets within a total distance of 700mm.



This product range comes with a full Lifetime Warranty as standard.

# YewdaleKestrel® Roller Blinds and Vertical Blinds

YewdaleKestrel® Roller Blinds and Vertical Blinds



## KR20S Slow-rise spring

### Features:

The YewdaleKestrel® KR20S spring roller blind with a brake to ensure a slow, smooth and quiet operation. White metal universal brackets fitted to white aluminium back bar for face, top or side fixing with 32mm grooved aluminium barrel. Fabric is locked into a groove in the barrel, and features a white tear drop aluminium bottom bar with cord pull as standard. This system uses magnetic wall-fix/top-fix brackets. This ensures that, under excess load, the back bar separates from the bracket leaving no remaining points of ligature.

### Benefits:

Smooth and quiet operation makes the KR20S an excellent choice for a vast range of applications. The KR20S braked spring blind provides the ultimate cord/chain-free solution and offers exceptional ease of use. The slow-rise spring is enclosed within the barrel and supported by sturdy, attractive metal brackets. Fitted to white aluminium back bar and secured by magnetic brackets for 100% fail-safe\* anti-ligature functionality. Fabric is locked into the barrel and bottom bar maintaining exceptional edge to edge coverage for even better shading properties.

### Options:

Spring limit stop; Alternative bottom bars, including fully fabric covered, in aluminium or plastic, and aluminium Tear Drop in black or silver.

### Specification:

The magnetic anti-ligature YewdaleKestrel® KR20S braked spring control roller blind with vandal resistant, cord/chain-free braked spring as manufactured by Yewdale, +44 (0)1268 570900. Flame retardant fabric from the YewdaleDefiant® range, locked into grooved 32mm aluminium barrel along with white Tear Drop aluminium bottom bar. Slow-rise spring and braked spring end housed within aluminium barrel supported by white metal brackets, and fitted to white aluminium back bar, secured by magnetic wall-fix/top-fix brackets spaced in accordance with manufacturer's recommendations. Fitting to be carried out by trained and accredited personnel.

**YewdaleKestrel® KR20S is the only approved braked spring roller blind system to be used with YewdaleKestrel®**

For more information on the YewdaleKestrel® Policy, please turn to page 6.

## Roller Blinds Specification Guide

Roller blinds	Min Width*	Max Width	Max Drop	Max M <sup>2</sup>
KR20S**	450	1850	2450	4.3

Sizes shown in millimetres. Based on fabric weight of 220g/m<sup>2</sup>, e.g. Thames. Use of heavier fabrics may require appropriate reductions. \*Where adjacent blinds are fitted with YewdaleKestrel®, there should be no more than 2 brackets within a total distance of 700mm.

\*\*Use of limit stop may require appropriate reductions.



This product range comes with a full Lifetime Warranty as standard.



## KVL31 Premium wand

### Features:

The YewdaleKestrel® KVL31 premium vertical blind, with added wand control, provides a safe solution for a host of anti-ligature shading requirements. Incorporating 40 x 25mm premium profiled white aluminium head-rail and wheeled replaceable plastic carrier trucks, and magnetic wall-fix/top-fix brackets. This ensures that, under excess load, the head-rail separates from the brackets leaving no remaining points of ligature - a highly essential safety feature. The constant transport of the louvres is guaranteed by the precision made aluminium spindle shaft. Wand control operation with built-in slip clutch for louver tilt. 127mm or 89mm louvres available - all with enclosed louver weights.

### Benefits:

Robust with high quality performance, whilst remaining pleasing to the eye, the KVL31 makes an excellent choice for many sectors. The comprehensive truck options satisfy the most demanding of environments whether it be residential or commercial. The utilisation of the wand control provides the ultimate cord/chain-free solution and offers exceptional ease of use. The control mechanism is enclosed within the head-rail and supported on a sturdy, aluminium back bar, secured by magnetic brackets for 100% fail-safe\* anti-ligature functionality. With enclosed louver weights as standard throughout to remove any individual loose part issues.

### Options:

Spring metal trucks; low load magnet.

### Specification:

The magnetic anti-ligature YewdaleKestrel® KVL31 vertical blind with added wand control as manufactured by Yewdale, +44 (0)1268 570900. 127mm or 89mm louvres in flame retardant fabric from the YewdaleDefiant® range, fixed to replaceable wheeled truck hooks and accommodating enclosed louver weights throughout. Premium 40 x 25mm white powder-coated head-rail with wand control operation and built-in slip clutch. Secured by magnetic wall-fix/top-fix brackets spaced in accordance with manufacturer's recommendations. Fitting to be carried out by trained and accredited personnel.

**YewdaleKestrel® KVL31 is the only approved premium wand control vertical blind system to be used with YewdaleKestrel®**

For more information on the YewdaleKestrel® Policy, please turn to page 6.



Find this product on NBS Source

## Vertical Blinds Specification Guide

Vertical blinds	Min Width*	Max Width	Max Drop	Max M <sup>2</sup>
KVL31	300	2800	3200	8.0

Sizes shown in millimetres. Based on fabric weight of 220g/m<sup>2</sup>, e.g. Thames. Use of heavier fabrics may require appropriate reductions. \*Where adjacent blinds are fitted with YewdaleKestrel®, there should be no more than 2 brackets within a total distance of 700mm.



This product range comes with a full Lifetime Warranty as standard.

C/SIB 1976 reference by Sib Agency		
(76.7)	X	



**Head Office:**  
Enterprise Way,  
Wickford, Essex, SS11 8DH  
**Call:** +44 (0)1268 570900  
**Email:** sales@yewdale.co.uk

**London Office & Showroom:**  
4 Sutton Lane,  
London, EC1M 5PU  
**Call:** +44 (0)203 818 5905

For more information on all  
Yewdale products, please call  
the sales department.



yewdale **Defiant**<sup>®</sup>  
FABRIC AND BLIND SYSTEMS



yewdale **Kestrel**<sup>®</sup>  
MAGNETIC ANTI-LIGATURE SYSTEM



yewdale **Movatrack**<sup>®</sup>  
CUBICLE AND TRACK SYSTEMS



yewdale **Harrier**<sup>®</sup>  
CUBICLE AND SHOWER CURTAINS



yewdale **Vitesse**<sup>®</sup>  
CURTAIN TRACK SYSTEMS