

Dart

Blackout PVC fabric



Roller and louvre blackout fabric collection for public and corporate use.

- 4-ply PVC composite
- Anti-bacterial
- Easy clean
- Fire retardant

YewdaleDefiant® dart fabric

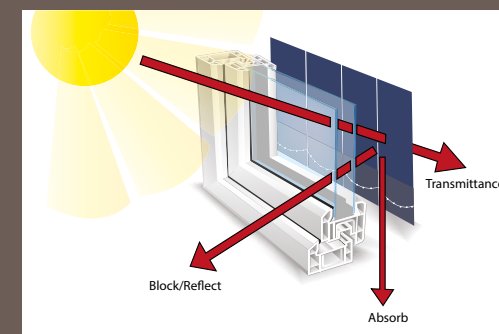
shading efficiency

Transmittance is the amount of light and heat transmitted beyond the fabric. The lower the amount, the greater the efficiency.

Block/reflect is the amount of heat and light that is blocked or reflected. The higher the amount, the greater the efficiency.

Absorption is the amount of heat and light absorbed in the fabric. The higher the amount, the lower the efficiency.

Ultraviolet protection illustrates how protective the fabric is against ultraviolet rays. The higher the amount, the greater the effectiveness.



this fabric is GREENGUARD certified as a low emissions product suitable for indoor use.

Please enquire about other fabrics that we have available...



	3000 mm	2500 mm	1830 mm	127mm / 89 mm	Heat Transmittance %	Light Transmittance %	Shading Co-efficiency	Light Reflection %	Sun Block & UV Protection %	Absorption %	Heat Reflection %
Snow White					0	0	100	50	100	100	60
Vanilla					0	0	0.33	83	100	30	69
Beige					0	0	0.38	71	100	37	63
Magnolia					0	0	0.32	83	100	35	65
Grey					0	0	0.45	57	100	49	51
Iron					0	0	0.59	30	100	71	29
Black					0	0	0.71	5	100	95	5
Burgundy					0	0	0.42	7	100	83	17
Dark Green					0	0	0.55	14	100	92	8
Navy					0	0	0.39	8	100	91	9
Royal Blue					0	0	0.68	8	100	88	12
Pink					0	0	0.41	62	100	34	66
Mint Green					0	0	0.41	60	100	34	66
Sky Blue					0	0	0.41	62	100	36	64
Black / White					0	0	0.33	83	100	27	73

YewdaleDefiant® dart fabric

The YewdaleDefiant® Dart fabric is designed for areas where a high level of light exclusion is required along with exceptional performance characteristics. The flame retardant fibreglass composition with a PVC coating for easy cleaning, ensures this fabric is suitable for almost all applications. With 15 colours and the most advanced range of fabric widths available, fabric joins are kept to a minimum to assist in wastage, design and speed of fabrication. This fabric comes with a full Biosafe accreditation due to the anti-microbial properties of the fabric which inhibit the spread of bacteria, which has been tested under stringent conditions.

- Fabric Composition:** 4-ply; 75% PVC, 25% Fibreglass
- Fabric Range:** 15
- Louvre Widths:** 127mm (5")
89mm (3.5")
- Vertical Roll Length:** 100m
- Roller Fabric Width:** 1830mm (72")
2500mm (98.4")
3000mm (118.11")
- Roller Fabric Length:** 30m
- Fabric Thickness:** 0.25mm - 0.33mm
- Fabric Weight:** 407 g/m² - 12oz/syd
- Fire Retardancy:** Conforms to; BS5867, Part 2: Type B 2008 and BS 5867: Part 2: 2008 Type C
- IMO Certified:** IMO 2010 FTP CODE ANNEX 1 PART 7
- Shading:** Blackout. Suitable for computer environments
- Moisture Resistance:** Suitable for moist conditions
- Anti Bacterial:** Biosafe Accreditation
- Care Instructions:** Wipe clean with a mild 5% detergent solution



this fabric range comes with a full **LIFETIME Warranty** as standard.

this fabric range comes with a full **BIOSAFE Accreditation** as standard.

CI/SFB 1976 reference by SFB Agency		
(76.7)	X	

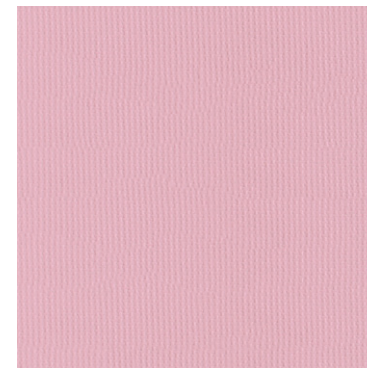
Snow White



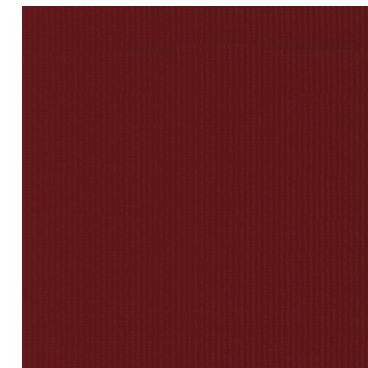
Vanilla



Pink



Burgundy



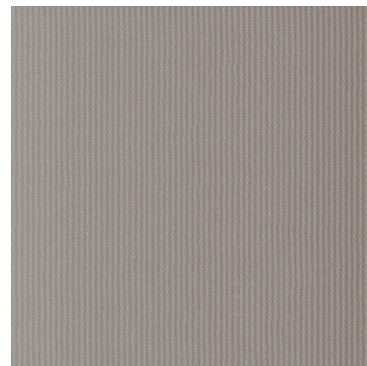
Black



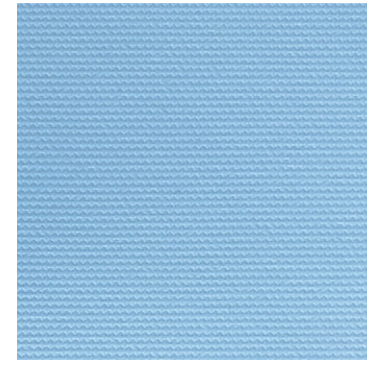
Grey



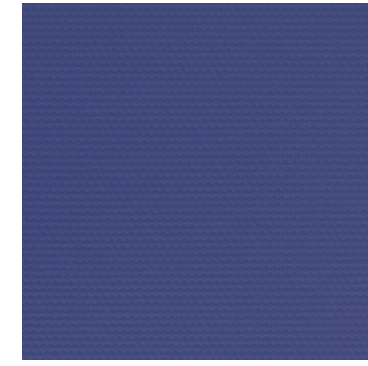
Iron



Sky Blue



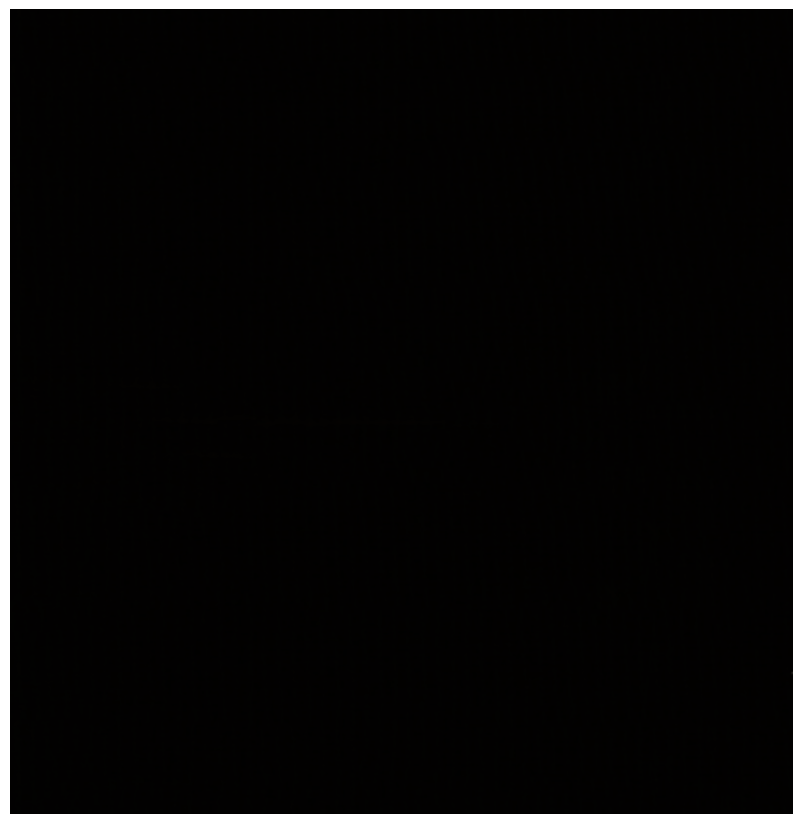
Royal Blue



Navy



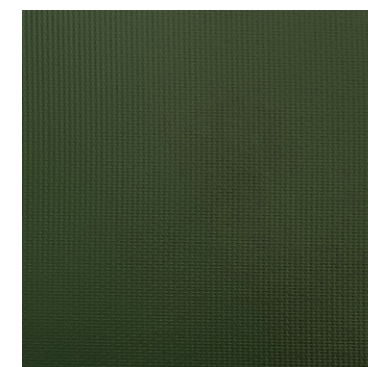
Black / White



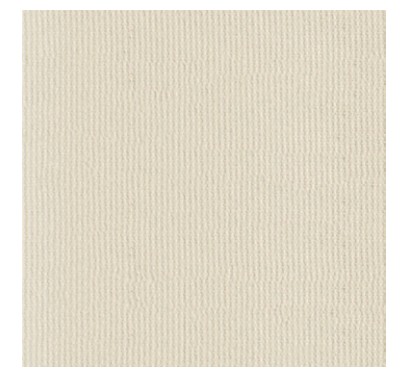
Mint Green



Dark Green



Beige



Magnolia

