

Eden

Blackout WB fabric

Up to
85%
Heat & Light
Reflection on
all colours!

Roller blackout whiteback fabric range for public and corporate use.

- Exterior uniformity
- Increased solar reflectance
- Superior blackout qualities
- Fire retardant

YewdaleDefiant® eden blackout WB

shading efficiency

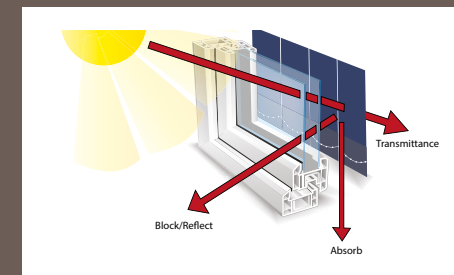
Transmittance is the amount of light and heat transmitted beyond the fabric. The lower the amount, the greater the efficiency.

Block/reflect is the amount of heat and light that is blocked or reflected. The higher the amount, the greater the efficiency.

Absorption is the amount of heat and light absorbed in the fabric. The higher the amount, the lower the efficiency.

Ultraviolet protection illustrates how protective the fabric is against ultraviolet rays. The higher the amount, the greater the effectiveness.

Shading Co-efficiency is tested using a single 6mm glass glazing system with and without a blind to obtain solar heat gain measurements. The heat gained with a blind at the window is divided by the solar heat gained without a blind at the window, giving the Shading Co-Efficient. The lower the result the better the performance of the blind at blocking solar heat.



OEKO-TEX®
CONFIDENCE IN TEXTILES
STANDARD 100
13.HTR.23374 HOHENSTEIN HTTI

	2000 mm	Heat Transmittance %	Light Transmittance %	Shading Co-efficiency	Light Reflection %	Sun Block & UV Protection %	Absorption %	Heat Reflection %
Frost		0	0	0.30	85	100	25	75
Sesame		0	0	0.30	85	100	25	75
Taupe		0	0	0.30	85	100	25	75
Scarlet		0	0	0.30	85	100	25	75
Marsh		0	0	0.30	85	100	25	75
Dark Azure		0	0	0.30	85	100	25	75
Surf		0	0	0.30	85	100	25	75
Ash		0	0	0.30	85	100	25	75
Graphite		0	0	0.30	85	100	25	75
Coal		0	0	0.30	85	100	25	75

Please enquire about other fabrics that we have available...



dart eden blackout lyn roach roe stour thames yare harrier tara dimout & blackout wb tara screen wb

YewdaleDefiant® eden blackout WB

YewdaleDefiant® Eden Blackout White Back fabric is a simple way to achieve exterior uniformity whilst allowing for individual colour schemes within. The white acrylic foam coating on the back blocks sunlight from entering, casting the room into darkness. It is fire retardant, odourless and comes with a lifetime warranty. Another benefit of having a white backed fabric is the increased levels of solar reflectance which reduces interior heat levels and protects furniture in the room whatever colour is chosen. The colour fabric front directly pairs with the Eden Blackout Colour Backed range helping to maintain continuity across spaces that require different yet coherent levels of shading.

Fabric Composition: 100% Polyester
Fabric Range: 10
Roller Fabric Width: 2000mm
Roller Fabric Length: 30m
Fabric Thickness: 0.48mm
Fabric Weight: 390 g/m²
Fire Retardancy: BS 5867 Part2 Type B, DIN 4102 B1

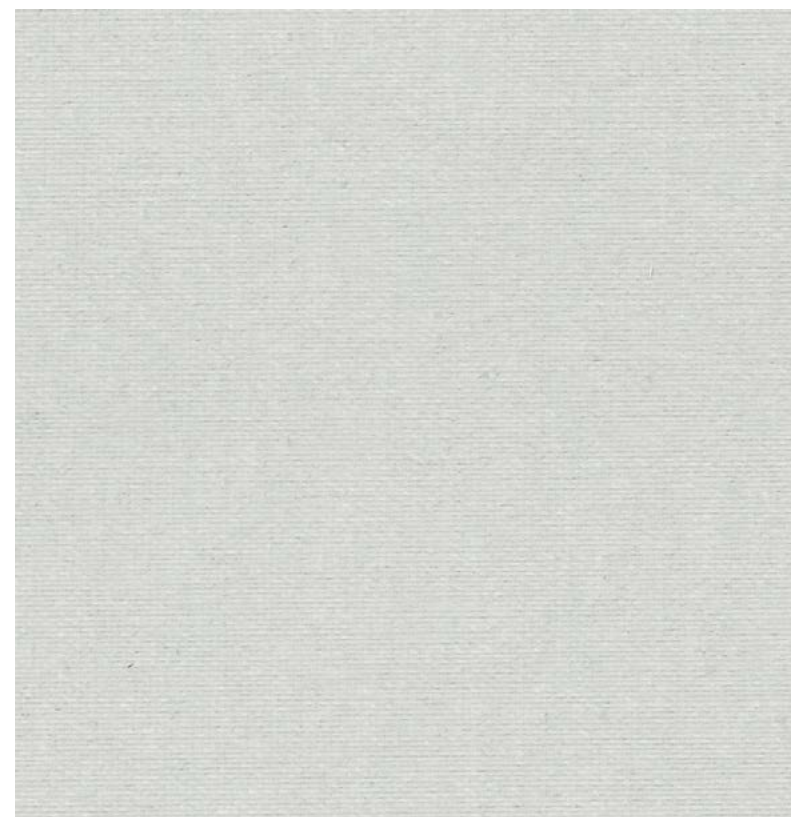
Shading: Blackout. Suitable for computer environments

Moisture Resistance: Suitable for moist conditions

Lightfastness: 5-6< (EN ISO 105-B02)

Care Instructions: Wipe with damp sponge. Do not tumble dry; Do not dry clean: Do not iron

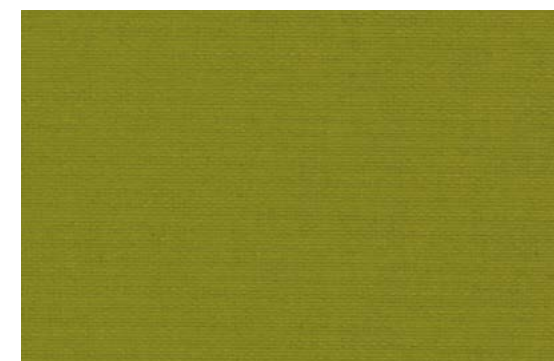
Ash



Frost



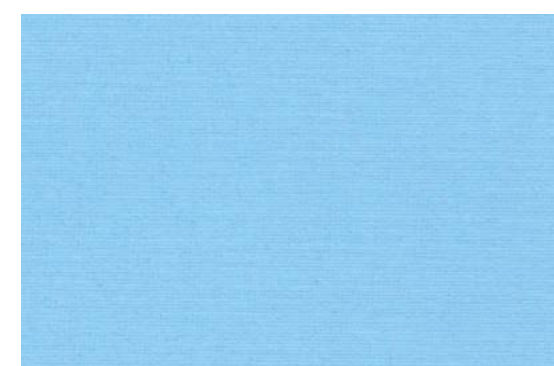
Marsh



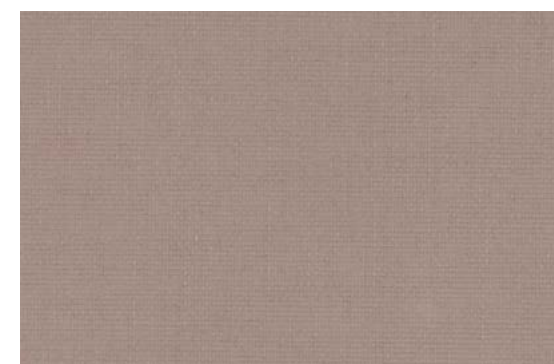
Sesame



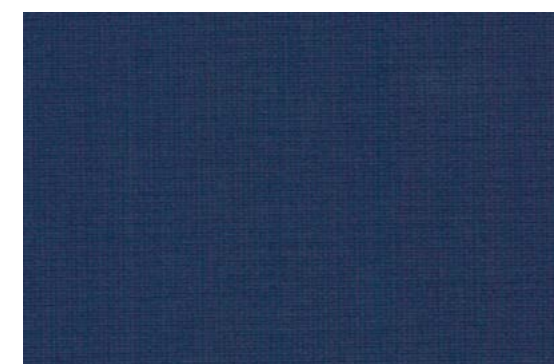
Surf



Taupe



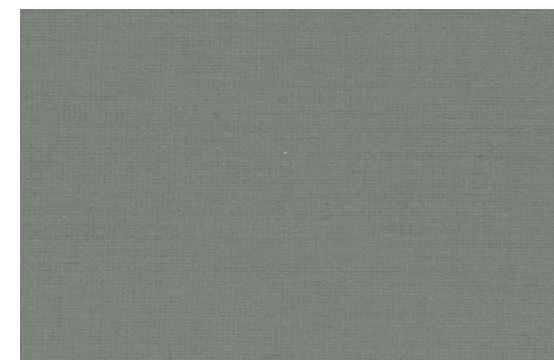
Dark Azure



Scarlet



Graphite



Coal



Please note that when welding this fabric to create a join, it can only be accomplished via two methods; conventional stitching or ultrasonic bonding.



this fabric range comes with a full **LIFETIME Warranty** as standard.

CI/SFB 1976 reference by SFB Agency

(76.7)	X
--------	---