

Stour

Blackout fabric



Stour fabric delivers an effective blackout solution for a wide range of suitable environments.

- 30 colours
- Non-fire-retardant
- Effective blackout solution

YewdaleDefiant® stour

shading efficiency

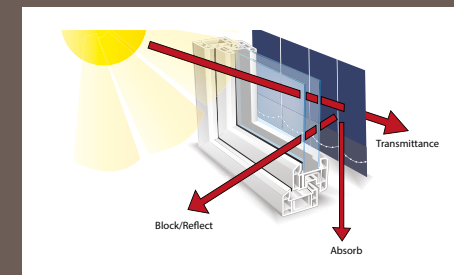
Transmittance is the amount of light and heat transmitted beyond the fabric. The lower the amount, the greater the efficiency.

Block/reflect is the amount of heat and light that is blocked or reflected. The higher the amount, the greater the efficiency.

Absorption is the amount of heat and light absorbed in the fabric. The higher the amount, the lower the efficiency.

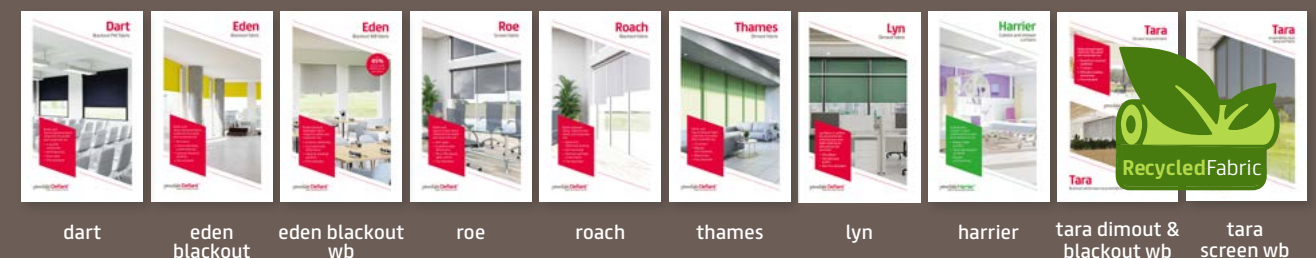
Ultraviolet protection illustrates how protective the fabric is against ultraviolet rays. The higher the amount, the greater the effectiveness.

Shading Co-efficiency is tested using a single 6mm glass glazing system with and without a blind to obtain solar heat gain measurements. The heat gained with a blind at the window is divided by the solar heat gained without a blind at the window, giving the Shading Co-Efficient. The lower the result the better the performance of the blind at blocking solar heat.



	2500mm	2000 mm	89 mm	Heat Transmittance %	Light Transmittance %	Shading Co-efficiency	Light Reflection %	Sun Block & UV Protection %	Absorption %	Heat Reflection %
Frost				0	0	0.30	85	100	25	75
Sesame				0	0	0.34	77	100	31	69
Vanilla				0	0	0.35	69	100	33	67
W. Almond				0	0	0.34	74	100	31	69
Taupe				0	0	0.51	32	100	59	41
Chocolate				0	0	0.66	14	100	85	15
Plum				0	0	0.49	12	100	55	45
Lilac				0	0	0.43	32	100	46	54
Dusty Pink				0	0	0.42	47	100	44	56
Rose				0	0	0.37	62	100	36	64
Pink				0	0	0.42	28	100	45	55
Berry				0	0	0.61	11	100	76	24
Scarlet				0	0	0.46	18	100	52	48
Tangerine				0	0	0.45	29	100	50	50
Sunshine				0	0	0.39	70	100	40	60
Primrose				0	0	0.35	76	100	33	67
Apple				0	0	0.41	62	100	43	57
Marsh				0	0	0.52	25	100	61	39
Pine Green				0	0	0.55	14	100	66	34
Dark Azure				0	0	0.70	7	100	90	10
Cobalt				0	0	0.60	11	100	74	26
Turquoise				0	0	0.50	27	100	58	42
Marine				0	0	0.59	21	100	72	28
Surf				0	0	0.39	52	100	40	60
Ash				0	0	0.38	56	100	39	61
Stone Grey				0	0	0.49	49	100	56	44
Fossil Grey				0	0	0.59	31	100	72	28
Graphite				0	0	0.62	24	100	78	22
Steel				0	0	0.69	13	100	88	12
Coal				0	0	0.72	7	100	93	7

Please enquire about other fabrics that we have available...



YewdaleDefiant® stour

YewdaleDefiant® Stour fabric is a blackout material ideal for spaces where fire resistance regulations are not required. Available in 30 colours and a range of widths, including 89mm, 2000mm, and 2500mm, it offers a versatile solution for any window. The fabric is suitable for a variety of applications and environments, including those exposed to moisture. Additionally, Stour features Biosafe, an internationally recognised antimicrobial formula, tested to meet strict standards for infection control. Stour provides a durable, wipe-clean surface that maintains darkness thanks to its thick, high-quality composition.

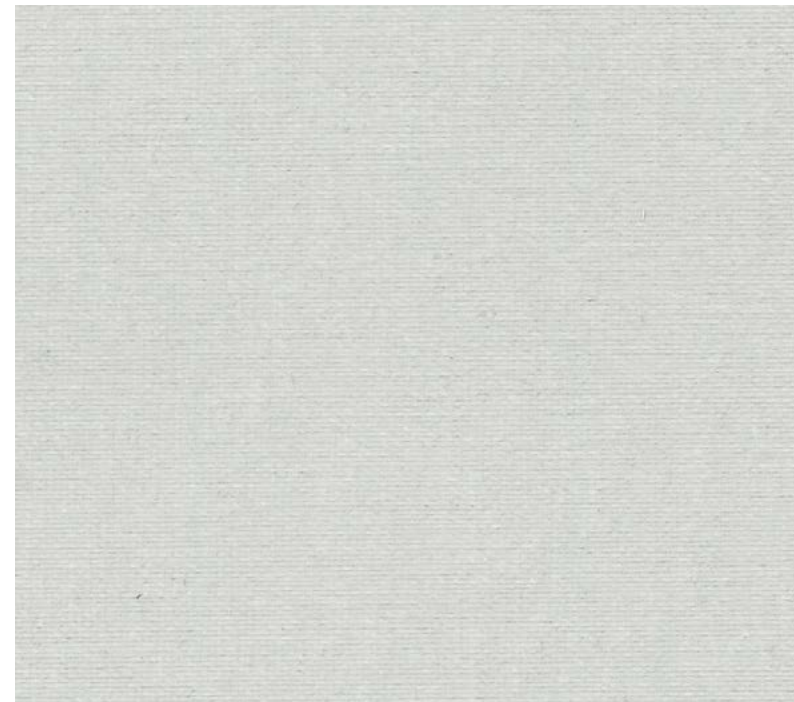
- Fabric Composition:** 100% Polyester
- Fabric Range:** 30
- Louvre Widths:** 89mm
- Louvre Roll Length:** 100m
- Roller Fabric Width:** 2000mm
2500mm
- Roller Fabric Length:** 30m
- Fabric Thickness:** 0.48mm
- Fabric Weight:** 390 g/m²
- Shading:** Blackout. Suitable for computer environments
- Moisture Resistance:** Suitable for moist conditions
- Lightfastness:** 5-6< (EN ISO 105-B02)
- Care Instructions:** Wipe with damp sponge. Do not tumble dry; Do not dry clean: Do not iron



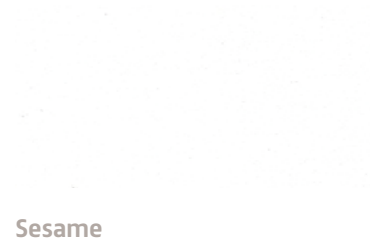
this fabric range comes with a full **LIFETIME Warranty** as standard.

CI/SFB 1976 reference by SFB Agency		
(76.7)	X	

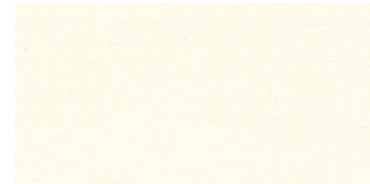
Ash



Frost



Sesame



Vanilla



Warm Almond



Taupe



Chocolate



Plum



Lilac



Dusty Pink



Rose



Pink



Berry



Scarlet



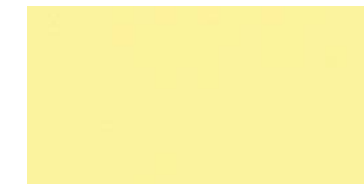
Tangerine



Sunshine



Primrose



Apple



Marsh



Pine Green



Dark Azure



Cobalt



Turquoise



Marine



Surf



Stone Grey



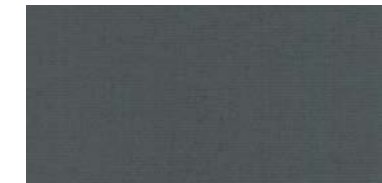
Fossil Grey



Graphite



Steel



Coal

