

YewdaleDefiant® Thames dimout fabric:



Fire Retardant



Antibacterial



40 Colours



Multi Sized

Perfect for areas where privacy is needed as well as sufficient light shading. With a distinguished and stylish look, the flame retardant fabric has a choice of 40 colours in a convenient range of widths.

This fabric incorporates Biosafe which is the international accreditation standard of our proven antimicrobial formula that has been tested under the most stringent measures to ensure effective inhibiting of infection.

Please enquire about other fabrics that we have available...



dart eden eden blackout white back lyn roach roe



stour yare harrier tara dimout & blackout wb tara screen wb

Thames

Dimout fabric



yewdale Defiant®
FABRIC AND BLIND SYSTEMS

YewdaleDefiant® thames fabric

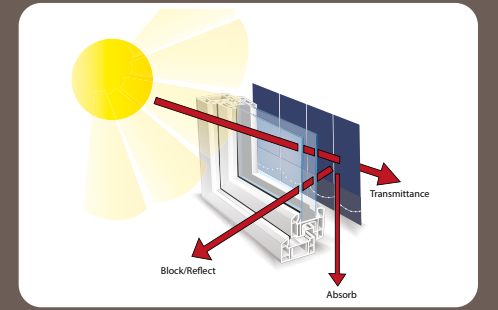
shading efficiency

Transmittance is the amount of light and heat transmitted beyond the fabric. The lower the amount, the greater the efficiency.

Block/reflect is the amount of heat and light that is blocked or reflected. The higher the amount, the greater the efficiency.

Absorption is the amount of heat and light absorbed in the fabric. The higher the amount, the lower the efficiency.

Ultraviolet protection illustrates how protective the fabric is against ultraviolet rays. The higher the amount, the greater the effectiveness.



	2500 - 3000mm	89 - 2000mm	Heat Transmittance %	Light Transmittance %	Ultraviolet Protection %	Absorption %	Heat Reflectance %	Light Reflectance %	Shading Co-efficiency	GTOT		2500 - 3000mm	89 - 2000mm	Heat Transmittance %	Light Transmittance %	Ultraviolet Protection %	Absorption %	Heat Reflectance %	Light Reflectance %	Shading Co-efficiency	GTOT	
Vanilla			13	10	90	13	73	77	0.35	0.29	Mustard			11	11	100	23	66	66	0.54	0.39	
Tan			9	1	100	34	56	42	0.44	0.37	Marsh			9	1	100	76	43	23	0.52	0.44	
Linen			12	7	100	18	70	71	0.36	0.30	Lawn			<1	<1	100	80	20	19	0.64	0.54	
Stone			6	3	100	47	48	50	0.48	0.41	Pine Green			8	0	100	86	37	14	0.55	0.47	
Sandstone			13	9	100	16	71	74	0.36	0.30	Turquoise			8	1	100	71	46	28	0.51	0.43	
W. Almond			12	8	90	16	71	73	0.35	0.30	Aqua			9	1	100	70	47	29	0.49	0.42	
Rose			13	6	100	33	67	61	0.39	0.33	Mist			5	3	100	41	54	56	0.44	0.38	
Dusty Pink			11	3	100	45	63	52	0.41	0.35	Surf			11	4	100	26	63	55	0.40	0.34	
Smokey Mauve			9	1	100	67	51	32	0.47	0.40	Marine			1	<1	100	70	28	19	0.59	0.50	
Chocolate			1	0	100	87	14	13	0.68	0.58	Cobalt			6	0	100	59	35	10	0.56	0.47	
Pink			12	2	100	74	54	24	0.46	0.39	Dark Azure			0	0	100	89	11	7	0.69	0.59	
Lilac			11	2	100	61	58	37	0.44	0.37	Sesame			13	12	100	10	77	82	0.32	0.28	
Heather			9	1	100	31	60	43	0.41	0.35	Frost			14	12	100	9	78	84	0.32	0.27	
Plum			9	0	100	90	44	10	0.52	0.44	Ash			11	3	100	45	61	52	0.42	0.36	
Tangerine			11	2	100	72	51	26	0.48	0.41	Stone Grey			2	1	100	56	41	42	0.51	0.44	
Scarlet			7	1	100	84	41	15	0.53	0.45	Fossil Grey			<1	1	100	23	27	28	0.71	0.61	
Cherry			4	<1	100	62	34	16	0.56	0.47	Graphite			<1	0	100	82	18	19	0.65	0.55	
Berry			2	0	100	91	23	9	0.62	0.53	Steel			0	0	100	89	11	12	0.69	0.59	
Apple			4	1	100	54	42	42	0.52	0.44	Coal			0	0	100	94	6	6	0.72	0.61	
Primrose			13	9	100	18	68	73	0.38	0.32												
Sunshine			12	5	100	38	59	57	0.44	0.37												

OEKO-TEX®
CONFIDENCE IN TEXTILES
STANDARD 100
A10-0296

Products and specifications liable to change without notice E80E © Yewdale 2025 Performance data has been compiled using available group data and we recommend that fabric is checked for actual suitability for any particular application before use

F42

YewdaleDefiant[®] thames fabric

The YewdaleDefiant[®] Thames fabric is designed for areas where privacy is needed as well as sufficient light shading. The weaving process of this flame retardant composition ensures the fabric has a distinguished and stylish look suitable for most applications. With a strong choice of 40 colours, and a convenient range of fabric widths available, the potential applications for YewdaleDefiant[®] Thames fabric stretches the imagination. Thanks to the 2000mm, 2500mm or 3000mm widths, fabric joins are kept to a minimum to assist in wastage, design and fabrication. This fabric incorporates Biosafe which is the international accreditation standard of our proven antimicrobial formula that has been tested under the most stringent measures to ensure effective inhibiting of infection.

Fabric Composition: 100% Polyester
Fabric Range: 40
Louvre Widths: 89mm / 127mm
Vertical Roll Length: 100m
Roller Fabric Width: 2000mm
 2500mm / 3000mm[Ⓢ]
 See details overleaf

Roller Fabric Length: 30m
Fabric Thickness: 0.30mm
Fabric Weight: 220 g/m²
Fire Retardancy: Conforms to BS5867,
 Part 2: Type B 2008

IMO Certified: IMO 2010 FTP CODE
 ANNEX 1 PART 7

Shading: Dimout. Suitable for computer environments

Moisture Resistance: Suitable for moist conditions

Anti-Bacterial: Biosafe Accreditation

Care Instructions: Wipe with damp sponge. Do not tumble dry; Do not dry clean; Do not iron 5-6< (EN ISO 105-B02)
Options: Available in Eden Blackout fabric[Ⓢ]



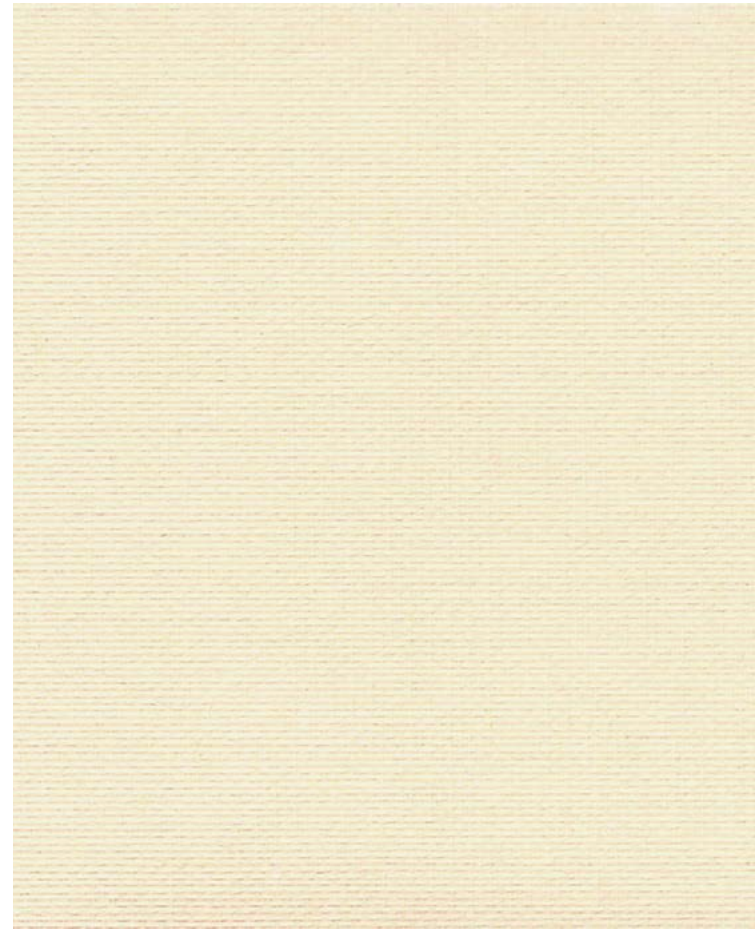
this fabric range comes with a full LIFETIME Warranty as standard.

this fabric range comes with a full BIOSAFE Accreditation as standard.

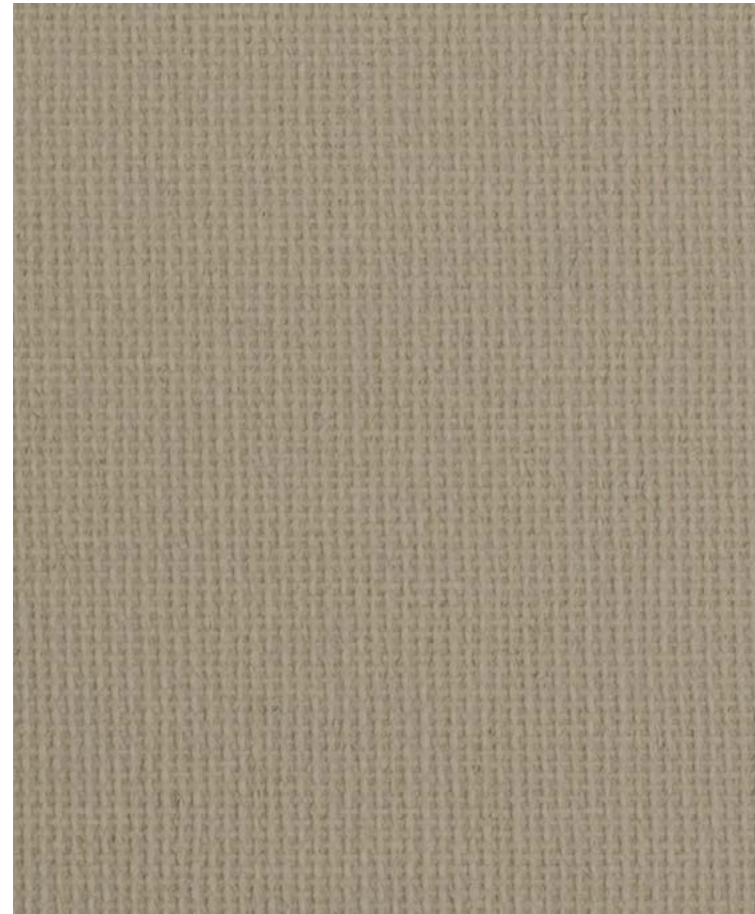
CI/SFB 1976 reference by SFB Agency

(76.7)	X
--------	---

Vanilla



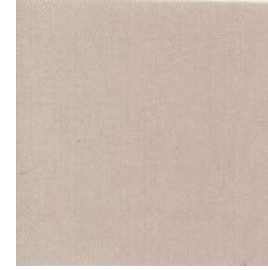
Tan



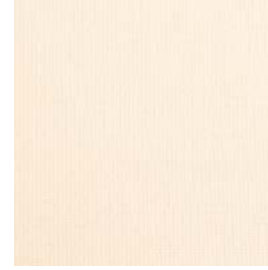
Linen



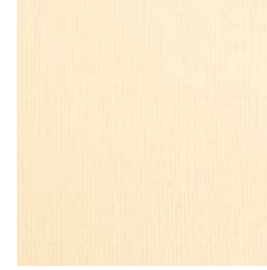
Stone



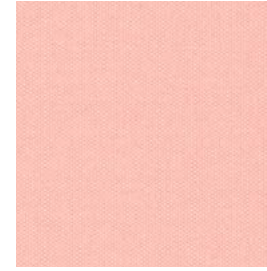
Sandstone



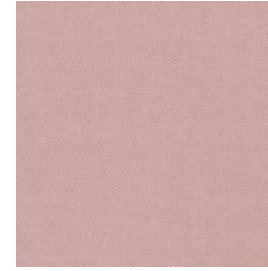
Warm Almond



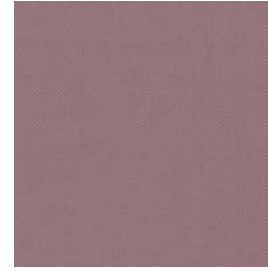
Rose



Dusty Pink



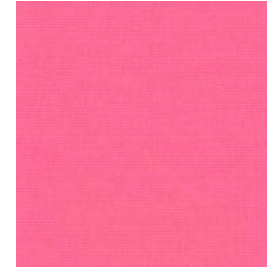
Smokey Mauve



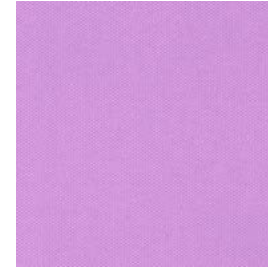
Chocolate



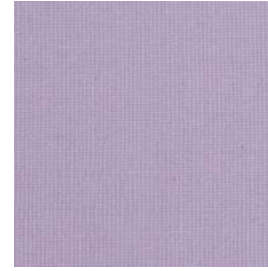
Pink



Lilac



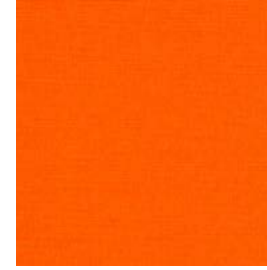
Heather



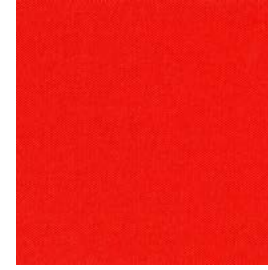
Plum



Tangerine



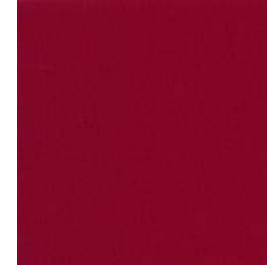
Scarlet



Cherry



Berry



Apple



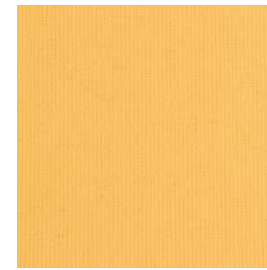
Primrose



Sunshine



Mustard



Marsh



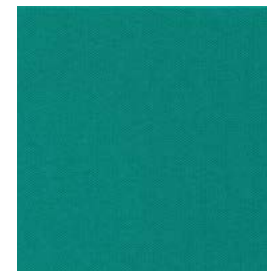
Lawn



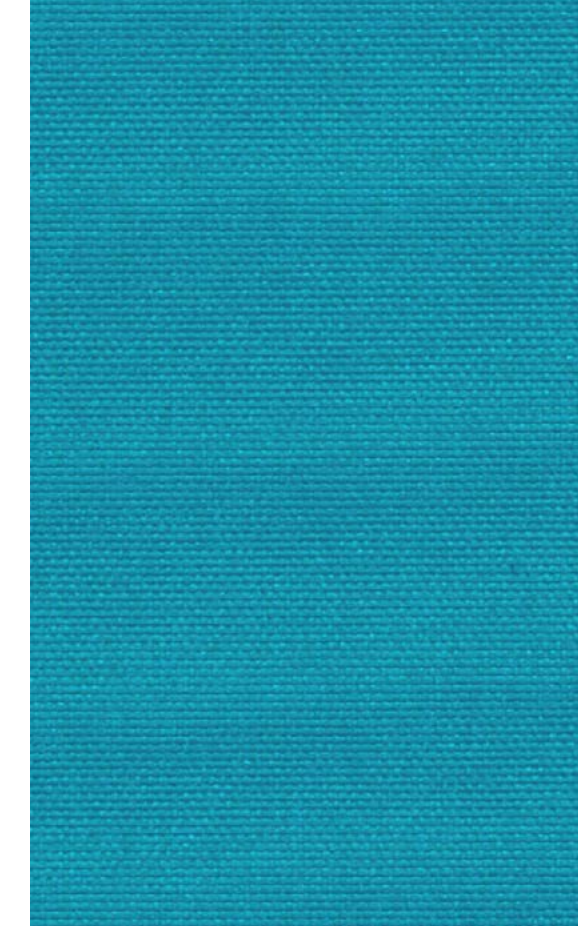
Pine Green



Turquoise



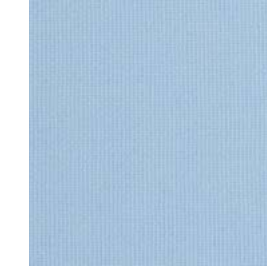
Aqua



Mist



Surf



Marine



Cobalt



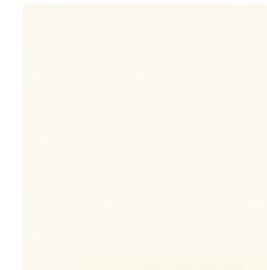
Dark Azure



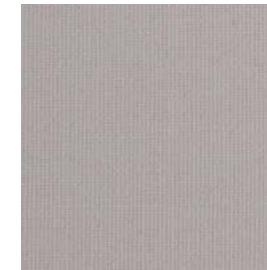
Sesame



Frost



Ash



Stone Grey



Fossil Grey



Graphite



Steel



Coal

